

Product datasheet for TP300521M

MCL1 (NM_021960) Human Recombinant Protein

Product data:

Product Type:	Recombinant Proteins
Description:	Purified recombinant protein of Homo sapiens myeloid cell leukemia sequence 1 (BCL2-related) (MCL1), transcript variant 1, 100 µg
Species:	Human
Expression Host:	HEK293T
Expression cDNA Clone or AA Sequence:	>RC200521 representing NM_021960 Red=Cloning site Green=Tags(s)

MFGLKRNAVIGLNLVYCGGAGLGAGSGGATRPGGRLATEKEASARREIGGGEGAVIGGSAGASPPSTLT
PDSRRVARPPPIGA EVPDVTATPARLLFFAPTRRAAPLEEMEAPAADAIMSPEEELDGYEPEPLGKRPAV
LPLLELVGESGNNSTDGSLPSTPPPAEEEEDELYRQSLEIISRYLREQATGAKDTKPMGRSGATSRKAL
ETLRRVGDGVQRNHETAFQGMRLKLDIKNEDDVKLSRVMIHVFSDGVTNWGRIVTLISFGAFVAKHLKT
INQESCIEPLAESITDVLVRTKRDWLVKQRGWDGFVEFFHVLEDLEGGIRNVLLAFAGVAGVAGLAYLIR

TRTRPLEQKLISEEDLAANDILDYKDDDDKV

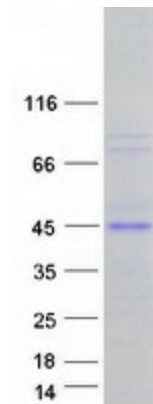
Tag:	C-Myc/DDK
Predicted MW:	37.2 kDa
Concentration:	>0.05 µg/µL as determined by microplate BCA method
Purity:	> 80% as determined by SDS-PAGE and Coomassie blue staining
Buffer:	25 mM Tris-HCl, 100 mM glycine, pH 7.3, 10% glycerol
Preparation:	Recombinant protein was captured through anti-DDK affinity column followed by conventional chromatography steps.
Note:	For testing in cell culture applications, please filter before use. Note that you may experience some loss of protein during the filtration process.
Storage:	Store at -80°C.
Stability:	Stable for 12 months from the date of receipt of the product under proper storage and handling conditions. Avoid repeated freeze-thaw cycles.
RefSeq:	<u>NP_068779</u>
Locus ID:	4170



[View online »](#)

UniProt ID:	Q07820
RefSeq Size:	4020
Cytogenetics:	1q21.2
RefSeq ORF:	1050
Synonyms:	bcl2-L-3; BCL2L3; EAT; Mcl-1; MCL1-ES; mcl1/EAT; MCL1L; MCL1S; TM
Summary:	This gene encodes an anti-apoptotic protein, which is a member of the Bcl-2 family. Alternative splicing results in multiple transcript variants. The longest gene product (isoform 1) enhances cell survival by inhibiting apoptosis while the alternatively spliced shorter gene products (isoform 2 and isoform 3) promote apoptosis and are death-inducing. [provided by RefSeq, Oct 2010]
Protein Families:	Druggable Genome, Transmembrane

Product images:



Coomassie blue staining of purified MCL1 protein (Cat# [TP300521]). The protein was produced from HEK293T cells transfected with MCL1 cDNA clone (Cat# [RC200521]) using MegaTran 2.0 (Cat# [TT210002]).