

Product datasheet for **TP300520L**

Dynein light chain (DNAL4) (NM_005740) Human Recombinant Protein

Product data:

Product Type: Recombinant Proteins

Description: Recombinant protein of human dynein, axonemal, light chain 4 (DNAL4), 1 mg

Species: Human

Expression Host: HEK293T

Expression cDNA Clone or AA Sequence: >RC200520 protein sequence
Red=Cloning site Green=Tags(s)

MGETEGKKDEADYKRLQTFPLVRHSDMPEEMRVETMELCVTACEKFSNNNESAAKMIKETMDKKFGSSWH
VWIGEGFGFEITHEVKNLLYLYFGGTLAVCVWKCS

TRTRPLEQKLISEEDLAANDILDYKDDDDKV

Tag: C-Myc/DDK

Predicted MW: 11.8 kDa

Concentration: >0.05 µg/µL as determined by microplate BCA method

Purity: > 80% as determined by SDS-PAGE and Coomassie blue staining

Buffer: 25 mM Tris-HCl, 100 mM glycine, pH 7.3, 10% glycerol

Preparation: Recombinant protein was captured through anti-DDK affinity column followed by conventional chromatography steps.

Note: For testing in cell culture applications, please filter before use. Note that you may experience some loss of protein during the filtration process.

Storage: Store at -80°C.

Stability: Stable for 12 months from the date of receipt of the product under proper storage and handling conditions. Avoid repeated freeze-thaw cycles.

RefSeq: [NP_005731](#)

Locus ID: 10126

UniProt ID: [O96015](#)

RefSeq Size: 1504

Cytogenetics: 22q13.1



[View online »](#)

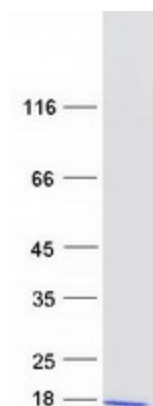
RefSeq ORF: 315

Synonyms: MRMV3; PIG27

Summary: This gene encodes an axonemal dynein light chain which functions as a component of the outer dynein arms complex. This complex acts as the molecular motor that provides the force to move cilia in an ATP-dependent manner. The encoded protein is expressed in tissues with motile cilia or flagella and may be involved in the movement of sperm flagella. [provided by RefSeq, Dec 2014]

Protein Pathways: Huntington's disease

Product images:



Coomassie blue staining of purified DNAL4 protein (Cat# [TP300520]). The protein was produced from HEK293T cells transfected with DNAL4 cDNA clone (Cat# [RC200520]) using MegaTran 2.0 (Cat# [TT210002]).