

Product datasheet for **TP300519**

GFPT2 (NM_005110) Human Recombinant Protein

Product data:

Product Type:	Recombinant Proteins
Description:	Recombinant protein of human glutamine-fructose-6-phosphate transaminase 2 (GFPT2), 20 µg
Species:	Human
Expression Host:	HEK293T
Expression cDNA Clone or AA Sequence:	>RC200519 protein sequence Red =Cloning site Green =Tags(s)

MCGIFAYMNYRVPRTTRKEIFETLIKGLQRLEYRGYDSAGVAIDGNNHEVKERHIQLVKKRGKVKALDEEL
YKQDSMDLKVEFETHFGIAHTRWATHGVPSAVNSHPQRSKGNFVVIHNGIITNYKDLRKFLKESKGYEF
ESETDTETIAKLIKVFDFNRETEDITFSTLVERVIQQLLEGAFALVFKSVHYPGEAVATRRGSPLLIGVRS
KYKLSTEQIPILYRTCTLENVKNICKTRMKRLDSSACLHAVGDKAVEFFASDASAIIEHTNRVIFLEDD
DIAAVADGKLSIHRVKRSASDDPSRAIQLQMEELQIMKGNFSAFMQKEIFEQPSVFNTMRGRVNFETN
TVLLGGLKDHLKEIRRCRRLVIGCGTSYHAAVATRQVLEELTELPVMVELASDFLDRNTPVFRDDVCCFF
ISQSGETADTLLALRYCKDRGALTGVGTNTVGVSSISRETDCGVHINAGPEVGVASTKAYTSQFISLVMFG
LMMSEDRLSLQNRQEIIRGLRSLPELIKEVLSLEEKIHDLALEYTQRSLVMGRGYNYATCLEGALKI
KEITYMHSEGILAGELKHGPLALIDKQMPVIMVIMKDPCKFAKQNALQQVTARQGRPIILCSKDDTESSK
FAYKTIELPHTVDCLQGILSVIPLQLLSFHLAVLRGYDVFPRNLAKSVTVE

TRTRPLEQKLISEEDLAANDILDYKDDDDKV

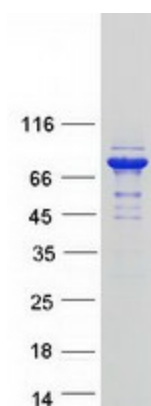
Tag:	C-Myc/DDK
Predicted MW:	76.8 kDa
Concentration:	>0.05 µg/µL as determined by microplate BCA method
Purity:	> 80% as determined by SDS-PAGE and Coomassie blue staining
Buffer:	25 mM Tris-HCl, 100 mM glycine, pH 7.3, 10% glycerol
Preparation:	Recombinant protein was captured through anti-DDK affinity column followed by conventional chromatography steps.
Note:	For testing in cell culture applications, please filter before use. Note that you may experience some loss of protein during the filtration process.
Storage:	Store at -80°C.



[View online »](#)

Stability:	Stable for 12 months from the date of receipt of the product under proper storage and handling conditions. Avoid repeated freeze-thaw cycles.
RefSeq:	NP_005101
Locus ID:	9945
UniProt ID:	O94808
RefSeq Size:	3011
Cytogenetics:	5q35.3
RefSeq ORF:	2046
Synonyms:	GFAT; GFAT 2; GFAT2
Summary:	Controls the flux of glucose into the hexosamine pathway. Most likely involved in regulating the availability of precursors for N- and O-linked glycosylation of proteins.[UniProtKB/Swiss-Prot Function]
Protein Families:	Protease
Protein Pathways:	Alanine, aspartate and glutamate metabolism, Amino sugar and nucleotide sugar metabolism, Metabolic pathways

Product images:



Coomassie blue staining of purified GFPT2 protein (Cat# TP300519). The protein was produced from HEK293T cells transfected with GFPT2 cDNA clone (Cat# [RC200519]) using MegaTran 2.0 (Cat# [TT210002]).