

Product datasheet for **TP300515M**

PCOLCE (NM_002593) Human Recombinant Protein

Product data:

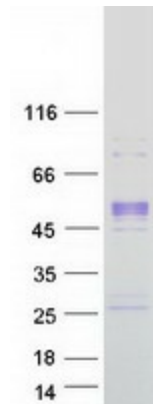
Product Type:	Recombinant Proteins
Description:	Recombinant protein of human procollagen C-endopeptidase enhancer (PCOLCE), 100 µg
Species:	Human
Expression Host:	HEK293T
Expression cDNA Clone or AA Sequence:	>RC200515 protein sequence Red =Cloning site Green =Tags(s)
	<p>MLPAATASLLGPLLACALLPFAQQQTPNYTRPVFLCGGDVKGESGYVASEGFNLYPPNKECIWITITVP EGQTVSLSFRVFDLELHPACRYDALEVFAGSGTSGQRLGRFCGTFRPAPLVAPGNQVTLRMTTDEGTGGR GFLLWYSGRATSGTEHQFCGGRLEKAQGLTTPNWPESDYPPGISCSWHIIAPPDQVIALTFEKFDLEPD TYCRYDSVSFNGAVSDDSRRLGKFCGDAVPGSISSEGNELLVQFVSDLSVTADGFSASYKTLPRGTAK GQGPGRGTEPKVKLPPKSPPEKTEESPSAPDAPTCPKQCRRTGTLQSNFCASSLVVTATVKSMVREP GGLAVTVSLIGAYKTGGLDLPSPPTGASLKFYVPCQCPPMCKGVSYLLMGQVEENRGPVLPPEFVVL HRPNQDQILTNLKSRKCPSPVRAAASQD</p> <p>TRTRPLEQKLISEEDLAANDILDYKDDDDKV</p>
Tag:	C-Myc/DDK
Predicted MW:	47.8 kDa
Concentration:	>0.05 µg/µL as determined by microplate BCA method
Purity:	> 80% as determined by SDS-PAGE and Coomassie blue staining
Buffer:	25 mM Tris-HCl, 100 mM glycine, pH 7.3, 10% glycerol
Preparation:	Recombinant protein was captured through anti-DDK affinity column followed by conventional chromatography steps.
Note:	For testing in cell culture applications, please filter before use. Note that you may experience some loss of protein during the filtration process.
Storage:	Store at -80°C.
Stability:	Stable for 12 months from the date of receipt of the product under proper storage and handling conditions. Avoid repeated freeze-thaw cycles.
RefSeq:	<u>NP_002584</u>



[View online »](#)

Locus ID:	5118
UniProt ID:	Q15113
RefSeq Size:	1651
Cytogenetics:	7q22.1
RefSeq ORF:	1347
Synonyms:	PCPE; PCPE-1; PCPE1
Summary:	Fibrillar collagen types I-III are synthesized as precursor molecules known as procollagens. These precursors contain amino- and carboxyl-terminal peptide extensions known as N- and C-propeptides, respectively, which are cleaved, upon secretion of procollagen from the cell, to yield the mature triple helical, highly structured fibrils. This gene encodes a glycoprotein which binds and drives the enzymatic cleavage of type I procollagen and heightens C-proteinase activity. [provided by RefSeq, Jul 2008]
Protein Families:	Secreted Protein

Product images:



Coomassie blue staining of purified PCOLCE protein (Cat# [TP300515]). The protein was produced from HEK293T cells transfected with PCOLCE cDNA clone (Cat# [RC200515]) using MegaTran 2.0 (Cat# [TT210002]).