

Product datasheet for **TP300508L**

ATP citrate lyase (ACLY) (NM_001096) Human Recombinant Protein

Product data:

Product Type: Recombinant Proteins
Description: Recombinant protein of human ATP citrate lyase (ACLY), transcript variant 1, 1 mg
Species: Human
Expression Host: HEK293T
Expression cDNA Clone or AA Sequence: >RC200508 protein sequence
Red=Cloning site Green=Tags(s)

MSAKAISEQTGKELLYKFICTTSAIQNRFKYARVTPD TDWARLLQDHPWLLSQNLVVKPDQLIKRRGKLG
LVGVNLTLDGVKSWLKPRLGQEATVGKATGFLKNFLIEPFVPHSQAEFYVCIYATREGDYVLFHHEGGV
DVGDVDAKAQKLLVGVDEKLN PEDIKHLLVHAPEDKKEILASFISGLFNFYEDLYFTYLEINPLVTKD
GVYVLDLAAKVDATADYICKVKWGDIEFPPPGREAYPEEAYIADLDAKSGASLKLTLNPKGRIWTMVA
GGGASVWYSDTICDLGGVNELANYGEYSGAPSEQQTYDYAKTILSLMTREKHPDGKILIGGSIANFTNV
AATFKGIVRAIRDYQGPLKEHEVTIFVRRGGPNYQEGLRVMGEVGKTTGIPIHVFGTETHMTAIVGMALG
HRPIPNQPPTAAHTANFLLNASGSTSTPAPSRTASFSESRADEVAPAKKAKPAMPQDSVSPRSLQGKST
TLFSRHTKAIWGMQTRAVQGMLDFDYVCSRDEPSVAAMVYPFTGDHKQKFYWGHEILIPVFKNMADAM
RKHPEVDVLINFASLRSAYDSTMETMNYAQIRTIAIIAEGIPEALTRKLIKKADQKGVTIIGPATVGGIK
PGCFKIGNTGGMLDNILASKLYRPGSVAYVSRSGGMSNELNIIISRTTDGVYEGVAIGGDRYPGSTFMDH
VLRDQDTPGVKMIWVLGEIGGTEEYKICRGIKEGRLTKPIVCWCIGTCATMFSEVQFGHAGACANQASE
TAVAKNQALKEAGVFVPRSFDELGEIISVYEDLVANGVIVPAQEVPPPTVPMDSWARELGLIRKPASF
MTSICDERGQELIYAGMPITEVFKEEMGIGGVLG LLWFQKRLPKYSCQFIEMCLMVTADHGPAVSGAHNT
IICARAGKDLVSSLTSGLLTIGDRFGGALDAAAKMFSKAFDSGIIPMEFVNKMKKEGKLMIGIGHRVKSI
NNPDMRVQILKDYVRQHFPATPLLDYALEVEKITT SKKPNLILNVDGLIGVAFVDMRLNCGSFTREEADE
YIDIGALNGIFVLGRSMGFIGHYLDQKRLKQGLYRHPWDDISYVLPEHMMSM

TRTRPLEQKLISEEDLAANDILDYKDDDDKV

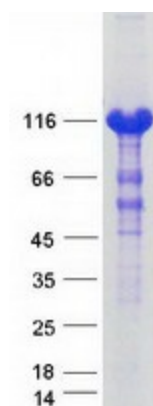
Tag: C-Myc/DDK
Predicted MW: 120.7 kDa
Concentration: >0.05 µg/µL as determined by microplate BCA method
Purity: > 80% as determined by SDS-PAGE and Coomassie blue staining
Buffer: 25 mM Tris-HCl, 100 mM glycine, pH 7.3, 10% glycerol



[View online »](#)

Preparation:	Recombinant protein was captured through anti-DDK affinity column followed by conventional chromatography steps.
Note:	For testing in cell culture applications, please filter before use. Note that you may experience some loss of protein during the filtration process.
Storage:	Store at -80°C.
Stability:	Stable for 12 months from the date of receipt of the product under proper storage and handling conditions. Avoid repeated freeze-thaw cycles.
RefSeq:	NP_001087
Locus ID:	47
UniProt ID:	P53396 , A0A024R1T9
RefSeq Size:	4450
Cytogenetics:	17q21.2
RefSeq ORF:	3303
Synonyms:	ACL; ATPCL; CLATP
Summary:	ATP citrate lyase is the primary enzyme responsible for the synthesis of cytosolic acetyl-CoA in many tissues. The enzyme is a tetramer (relative molecular weight approximately 440,000) of apparently identical subunits. It catalyzes the formation of acetyl-CoA and oxaloacetate from citrate and CoA with a concomitant hydrolysis of ATP to ADP and phosphate. The product, acetyl-CoA, serves several important biosynthetic pathways, including lipogenesis and cholesterologenesis. In nervous tissue, ATP citrate-lyase may be involved in the biosynthesis of acetylcholine. Multiple transcript variants encoding distinct isoforms have been identified for this gene. [provided by RefSeq, Dec 2014]
Protein Families:	Druggable Genome
Protein Pathways:	Citrate cycle (TCA cycle), Metabolic pathways

Product images:



Coomassie blue staining of purified ACLY protein (Cat# [TP300508]). The protein was produced from HEK293T cells transfected with ACLY cDNA clone (Cat# [RC200508]) using MegaTran 2.0 (Cat# [TT210002]).