

Product datasheet for **TP300507L**

Adrenomedullin (ADM) (NM_001124) Human Recombinant Protein

Product data:

Product Type: Recombinant Proteins

Description: Recombinant protein of human adrenomedullin (ADM), 1 mg

Species: Human

Expression Host: HEK293T

**Expression cDNA Clone
or AA Sequence:** >RC200507 protein sequence
Red=Cloning site **Green**=Tags(s)

MKLVSVALMYLGLSLAFLGADTARLDVASEFRKKWKNWALSRGKRELRMSSSYPTGLADVKAGPAQTLIRP
QDMKGASRSPEDSSPDAARIRVKRYRQSMNNFQGLRSFGCRFGTCTVQKLAHQIYQFTDKDKDNVAPRSK
ISPQGYGRRRRSLPEAGPGRTLVS SKPQAHGAPPPSGSAPHFL

TRTRPLEQKLISEEDLAANDILDYKDDDDKV

Tag: C-Myc/DDK

Predicted MW: 20.2 kDa

Concentration: >0.05 µg/µL as determined by microplate BCA method

Purity: > 80% as determined by SDS-PAGE and Coomassie blue staining

Buffer: 25 mM Tris-HCl, 100 mM glycine, pH 7.3, 10% glycerol

Preparation: Recombinant protein was captured through anti-DDK affinity column followed by conventional chromatography steps.

Note: For testing in cell culture applications, please filter before use. Note that you may experience some loss of protein during the filtration process.

Storage: Store at -80°C.

Stability: Stable for 12 months from the date of receipt of the product under proper storage and handling conditions. Avoid repeated freeze-thaw cycles.

RefSeq: [NP_001115](#)

Locus ID: 133

UniProt ID: [P35318](#)

RefSeq Size: 1606



[View online »](#)

Cytogenetics: 11p15.4

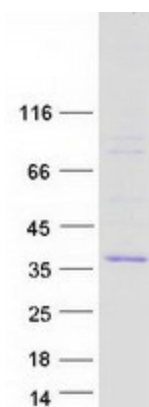
RefSeq ORF: 555

Synonyms: AM; PAMP

Summary: The protein encoded by this gene is a prehormone which is cleaved to form two biologically active peptides, adrenomedullin and proadrenomedullin N-terminal 20 peptide. Adrenomedullin is a 52 aa peptide with several functions, including vasodilation, regulation of hormone secretion, promotion of angiogenesis, and antimicrobial activity. The antimicrobial activity is antibacterial, as the peptide has been shown to kill *E. coli* and *S. aureus* at low concentration. [provided by RefSeq, Aug 2014]

Protein Families: Druggable Genome, Secreted Protein

Product images:



Coomassie blue staining of purified ADM protein (Cat# [TP300507]). The protein was produced from HEK293T cells transfected with ADM cDNA clone (Cat# [RC200507]) using MegaTran 2.0 (Cat# [TT210002]).