

Product datasheet for **TP300501L**

ARL2 (NM_001667) Human Recombinant Protein

Product data:

Product Type:	Recombinant Proteins
Description:	Recombinant protein of human ADP-ribosylation factor-like 2 (ARL2), 1 mg
Species:	Human
Expression Host:	HEK293T
Expression cDNA Clone or AA Sequence:	>RC200501 protein sequence Red =Cloning site Green =Tags(s)
	MGLLTILKMKKQKERELRLLMLGLDNAGKTTILKKFNGEDIDTISPTLGFNIKLEHRGFKLNIWDVGGQ KLSRSYWRNYFESTDGLIWWDSADRQRMQDCQRELQSLLEERLAGATLLIFANKQDLPALSSNAIRE VLELDSIRSHHWCIQGCSAVTGENLLPGIDWLLDDISSRIFTAD
	TRTRPLEQKLISEEDLAANDILDYKDDDDKV
Tag:	C-Myc/DDK
Predicted MW:	20.7 kDa
Concentration:	>0.05 µg/µL as determined by microplate BCA method
Purity:	> 80% as determined by SDS-PAGE and Coomassie blue staining
Buffer:	25 mM Tris-HCl, 100 mM glycine, pH 7.3, 10% glycerol
Preparation:	Recombinant protein was captured through anti-DDK affinity column followed by conventional chromatography steps.
Note:	For testing in cell culture applications, please filter before use. Note that you may experience some loss of protein during the filtration process.
Storage:	Store at -80°C.
Stability:	Stable for 12 months from the date of receipt of the product under proper storage and handling conditions. Avoid repeated freeze-thaw cycles.
RefSeq:	<u>NP_001658</u>
Locus ID:	402
UniProt ID:	<u>P36404</u> , <u>Q53YD8</u>
RefSeq Size:	993



[View online »](#)

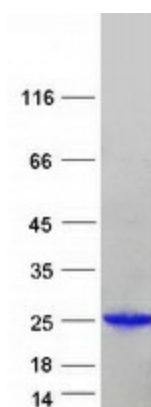
Cytogenetics: 11q13.1

RefSeq ORF: 552

Synonyms: ARFL2

Summary: This gene encodes a small GTP-binding protein of the RAS superfamily which functions as an ADP-ribosylation factor (ARF). The encoded protein is one of a functionally distinct group of ARF-like genes. [provided by RefSeq, Jul 2008]

Product images:



Coomassie blue staining of purified ARL2 protein (Cat# [TP300501]). The protein was produced from HEK293T cells transfected with ARL2 cDNA clone (Cat# [RC200501]) using MegaTran 2.0 (Cat# [TT210002]).