

## Product datasheet for **TP300499M**

### Complement factor B (CFB) (NM\_001710) Human Recombinant Protein

#### Product data:

**Product Type:** Recombinant Proteins  
**Description:** Recombinant protein of human complement factor B (CFB), 100 µg  
**Species:** Human  
**Expression Host:** HEK293T  
**Expression cDNA Clone or AA Sequence:** >RC200499 protein sequence  
**Red**=Cloning site **Green**=Tags(s)

MGSNLSPQLCLMPFILGLLSGGVTTTPWSLAWPQGSCSLEGVEIKGGSFRLQEGQALEYVCPSTGFPYP  
VQTRTCRSTGSWSTLKTQDQKTVRKAECRAIHCPHDFENGEYWPRSPYYNVSDEISFHICYDGYTLRGS  
ANRTCQVNGRWSGQTAICDNGAGYCSNPGIPIGTRKVGSRLEDSVTYHCSRGLTLRGSQRRTCQEGGS  
WSGTEPSCQDSFMYDTPQEVAEAFSSLTETIEGVDAEDGHGPGEQQRKIVLDPGSMNIYLVLDGSDS  
IGASNFTGAKKCLVNLIEKVASYGVKPRYGLVYATYPKIWKVSEADSSNADWTKQLNEINYEDHKLK  
SGTNTKKALQAVYSMMSWPDDVPPEGWNRTRHVILMTDGLHNMGGDPITVIDEIRDLLYIGKDRKNPRE  
DYLDVYVFGVPLVNQVNINALASKKDNEQHVFKVKMDMENLEDVFYQMIDESQSLSLCGMVWEHRKGTDY  
HKQPWQAKISVIRPSKGHESCMGAVSEYFVLTAACHFTVDDKEHSIKVSVGGEKRDLEIEVVLVFNPNY  
INGKKEAGIPEFYDYDVALIKLKNKLYGQTIRPICLPCTEGTTRALRPLPTTTCQQQKEELLPAQDIKA  
LFVSEEEKLTRKEYIKNGDKKGCERDAQYAPGYDKVKDISEVVTPRFLCTGGVSPYADPNTCRGDSG  
GPLIVHKRSRFIQVGVISWGVVDVCKNQKRQKQVPAHARDFHINLQVLPWLKEKLQDEDLGFL

**TRTRPLEQKLISEEDLAANDILDYKDDDDKV**

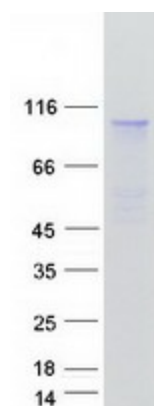
**Tag:** C-Myc/DDK  
**Predicted MW:** 83 kDa  
**Concentration:** >0.05 µg/µL as determined by microplate BCA method  
**Purity:** > 80% as determined by SDS-PAGE and Coomassie blue staining  
**Buffer:** 25 mM Tris-HCl, 100 mM glycine, pH 7.3, 10% glycerol  
**Preparation:** Recombinant protein was captured through anti-DDK affinity column followed by conventional chromatography steps.  
**Note:** For testing in cell culture applications, please filter before use. Note that you may experience some loss of protein during the filtration process.  
**Storage:** Store at -80°C.



[View online »](#)

|                          |  |
|--------------------------|--|
| <b>Stability:</b>        | Stable for 12 months from the date of receipt of the product under proper storage and handling conditions. Avoid repeated freeze-thaw cycles.  |
| <b>RefSeq:</b>           | <a href="#">NP_001701</a>  |
| <b>Locus ID:</b>         | 629  |
| <b>UniProt ID:</b>       | <a href="#">P00751</a> , <a href="#">A0A1U9X7H8</a>  |
| <b>RefSeq Size:</b>      | 2646   |
| <b>Cytogenetics:</b>     | 6p21.33  |
| <b>RefSeq ORF:</b>       | 2292   |
| <b>Synonyms:</b>         | AHUS4; ARMD14; BF; BFD; CFAB; CFBD; FB; FBI12; GBG; H2-Bf; PBF2  |
| <b>Summary:</b>          | This gene encodes complement factor B, a component of the alternative pathway of complement activation. Factor B circulates in the blood as a single chain polypeptide. Upon activation of the alternative pathway, it is cleaved by complement factor D yielding the noncatalytic chain Ba and the catalytic subunit Bb. The active subunit Bb is a serine protease which associates with C3b to form the alternative pathway C3 convertase. Bb is involved in the proliferation of preactivated B lymphocytes, while Ba inhibits their proliferation. This gene localizes to the major histocompatibility complex (MHC) class III region on chromosome 6. This cluster includes several genes involved in regulation of the immune reaction. Polymorphisms in this gene are associated with a reduced risk of age-related macular degeneration. The polyadenylation site of this gene is 421 bp from the 5' end of the gene for complement component 2. [provided by RefSeq, Jul 2008] |
| <b>Protein Families:</b> | Druggable Genome, Protease, Secreted Protein   |
| <b>Protein Pathways:</b> | Complement and coagulation cascades  |

### Product images:



Coomassie blue staining of purified CFB protein (Cat# [TP300499]). The protein was produced from HEK293T cells transfected with CFB cDNA clone (Cat# [RC200499]) using MegaTran 2.0 (Cat# [TT210002]).