

Product datasheet for TP300499L

Complement factor B (CFB) (NM_001710) Human Recombinant Protein

Product data:

Product Type:	Recombinant Proteins
Description:	Recombinant protein of human complement factor B (CFB), 1 mg
Species:	Human
Expression Host:	HEK293T
Expression cDNA Clone or AA Sequence:	>RC200499 protein sequence Red=Cloning site Green=Tags(s)

MGSNLSPQLCLMPFILGLLSGGVTTTPWSLAWPQGSCSLEGVEIKGGSFRLQEGQALEYVCPSTGFPYP
VQTRTCRSTGSWSTLKTQDQKTVRKAECRAIHCPHPDFENGEYWPRSPYYNVSDEISFHCYDGYTLRGS
ANRTCQVNGRWSGQTAICDNGAGYCSNPGIPIGTRKVGVSQYRLEDSVTYHCSRGLTLRGSQRRTCQEGGS
WSGTEPSCQDSFMYDTPQEVAEAFSSLTETIEGVDAEDGHGPGEQQKRKIVLDPGSMNIYLVLDGSDS
IGASNFTGAKKCLVNLIEKVASYGVKPRYGLVYATYPKIWKVSEADSSNADWTKQLNEINYEDHKLK
SGTNTKKALQAVYSMMSWPDDVPPEGWNRTRHVILMTDGLHNMGGDPITVIDEIRDLLYIGKDRKNPRE
DYLDVYVFGVPLVNQVNINALASKKDNEQHVFKVKMDMENLEDVFYQMIDESQSLSLCGMVWEHRKGTDY
HKQPWQAKISVIRPSKGHESCMGAVSEYFVLTAAHCFVTDDKEHSIKVSVGGEKRDLEIEVVLVFNPNY
INGKKEAGIPEFYDYDVALIKLKNKLYGQTIRPICLPCTEGTTRALRLLPPTTTCQQQKEELLPAQDIKA
LFVSEEEKLTRKEYIKNGDKKGCERDAQYAPGYDKVKDISEVVTPRFLCTGGVSPYADPNTCRGDSG
GPLIVHKRSRFIQVGVISWGVVDVCKNQKRQKQVPAHARDFHINLQVLPWLKEKLQDEDLGFL

TRTRPLEQKLISEEDLAANDILDYKDDDDKV

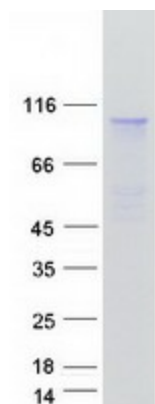
Tag:	C-Myc/DDK
Predicted MW:	83 kDa
Concentration:	>0.05 µg/µL as determined by microplate BCA method
Purity:	> 80% as determined by SDS-PAGE and Coomassie blue staining
Buffer:	25 mM Tris-HCl, 100 mM glycine, pH 7.3, 10% glycerol
Preparation:	Recombinant protein was captured through anti-DDK affinity column followed by conventional chromatography steps.
Note:	For testing in cell culture applications, please filter before use. Note that you may experience some loss of protein during the filtration process.
Storage:	Store at -80°C.



[View online »](#)

Stability:	Stable for 12 months from the date of receipt of the product under proper storage and handling conditions. Avoid repeated freeze-thaw cycles.
RefSeq:	NP_001701
Locus ID:	629
UniProt ID:	P00751 , A0A1U9X7H8
RefSeq Size:	2646
Cytogenetics:	6p21.33
RefSeq ORF:	2292
Synonyms:	AHUS4; ARMD14; BF; BFD; CFAB; CFBD; FB; FBI12; GBG; H2-Bf; PBF2
Summary:	This gene encodes complement factor B, a component of the alternative pathway of complement activation. Factor B circulates in the blood as a single chain polypeptide. Upon activation of the alternative pathway, it is cleaved by complement factor D yielding the noncatalytic chain Ba and the catalytic subunit Bb. The active subunit Bb is a serine protease which associates with C3b to form the alternative pathway C3 convertase. Bb is involved in the proliferation of preactivated B lymphocytes, while Ba inhibits their proliferation. This gene localizes to the major histocompatibility complex (MHC) class III region on chromosome 6. This cluster includes several genes involved in regulation of the immune reaction. Polymorphisms in this gene are associated with a reduced risk of age-related macular degeneration. The polyadenylation site of this gene is 421 bp from the 5' end of the gene for complement component 2. [provided by RefSeq, Jul 2008]
Protein Families:	Druggable Genome, Protease, Secreted Protein
Protein Pathways:	Complement and coagulation cascades

Product images:



Coomassie blue staining of purified CFB protein (Cat# [TP300499]). The protein was produced from HEK293T cells transfected with CFB cDNA clone (Cat# [RC200499]) using MegaTran 2.0 (Cat# [TT210002]).