

Product datasheet for **TP300497M**

Actin Regulatory Protein CAPG (CAPG) (NM_001747) Human Recombinant Protein

Product data:

Product Type:	Recombinant Proteins
Description:	Recombinant protein of human capping protein (actin filament), gelsolin-like (CAPG), 100 µg
Species:	Human
Expression Host:	HEK293T
Expression cDNA Clone or AA Sequence:	>RC200497 protein sequence Red =Cloning site Green =Tags(s)
	<p>MYTAIPQSGSPFPGSVQDPGLHVWRVEKLPVPVAQENQGVFFSGDSYLVLHNGPEEVSHLHLWIGQQSS RDEQGACAVLAVHLNLTLLGERPVQHREVQGNESDLFMSYFPRGLKYQEGGVESAFHKTSTGAPAAIKKLY QVKGKKNIRATERALNWDSFNTGDCFILDLGQNIFAWCGGKSNILERNKARDLALAIRDSERQGKAQVEI VTDGEEPAEMIQVLGPKPALKEGNPEEDLTADKANAQAALYKVSDATGQMNLTKVADSSPFALELLISD DCFVLDNGLCGKIYWKGRKANERQAALQVAEGFISRMQYAPNTQVEILPQGRESPIFKQFFKDWK</p> <p>TRTRPLEQKLISEEDLAANDILDYKDDDDKV</p>
Tag:	C-Myc/DDK
Predicted MW:	38.3 kDa
Concentration:	>0.05 µg/µL as determined by microplate BCA method
Purity:	> 80% as determined by SDS-PAGE and Coomassie blue staining
Buffer:	25 mM Tris-HCl, 100 mM glycine, pH 7.3, 10% glycerol
Preparation:	Recombinant protein was captured through anti-DDK affinity column followed by conventional chromatography steps.
Note:	For testing in cell culture applications, please filter before use. Note that you may experience some loss of protein during the filtration process.
Storage:	Store at -80°C.
Stability:	Stable for 12 months from the date of receipt of the product under proper storage and handling conditions. Avoid repeated freeze-thaw cycles.
RefSeq:	NP_001738
Locus ID:	822

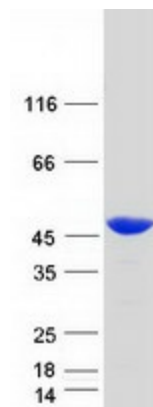


[View online »](#)

UniProt ID: [P40121](#), [V9HW69](#)
RefSeq Size: 1604
Cytogenetics: 2p11.2
RefSeq ORF: 1044
Synonyms: AFCP; HEL-S-66; MCP

Summary: This gene encodes a member of the gelsolin/villin family of actin-regulatory proteins. The encoded protein reversibly blocks the barbed ends of F-actin filaments in a Ca²⁺ and phosphoinositide-regulated manner, but does not sever preformed actin filaments. By capping the barbed ends of actin filaments, the encoded protein contributes to the control of actin-based motility in non-muscle cells. Alternatively spliced transcript variants have been observed for this gene. [provided by RefSeq, Jan 2012]

Product images:



Coomassie blue staining of purified CAPG protein (Cat# [TP300497]). The protein was produced from HEK293T cells transfected with CAPG cDNA clone (Cat# [RC200497]) using MegaTran 2.0 (Cat# [TT210002]).