

## Product datasheet for **TP300491**

### CKS2 (NM\_001827) Human Recombinant Protein

#### Product data:

Product Type:	Recombinant Proteins
Description:	Recombinant protein of human CDC28 protein kinase regulatory subunit 2 (CKS2), 20 µg
Species:	Human
Expression Host:	HEK293T
Expression cDNA Clone or AA Sequence:	>RC200491 protein sequence <b>Red</b> =Cloning site <b>Green</b> =Tags(s)
	MAHKQIYSDKYFDEHYEYRHVMLPRELSKQVPKTHLMSEEWRRRLGVQQLGWVHYMIHEPEPHILLFR RPLPKDQQK
	<b>TRTRPLEQKLISEEDLAANDILDYKDDDDKV</b>
Tag:	C-Myc/DDK
Predicted MW:	9.7 kDa
Concentration:	>0.05 µg/µL as determined by microplate BCA method
Purity:	> 80% as determined by SDS-PAGE and Coomassie blue staining
Buffer:	25 mM Tris-HCl, 100 mM glycine, pH 7.3, 10% glycerol
Preparation:	Recombinant protein was captured through anti-DDK affinity column followed by conventional chromatography steps.
Note:	For testing in cell culture applications, please filter before use. Note that you may experience some loss of protein during the filtration process.
Storage:	Store at -80°C.
Stability:	Stable for 12 months from the date of receipt of the product under proper storage and handling conditions. Avoid repeated freeze-thaw cycles.
RefSeq:	<a href="#">NP_001818</a>
Locus ID:	1164
UniProt ID:	<a href="#">P33552</a>
RefSeq Size:	627
Cytogenetics:	9q22.2



[View online »](#)

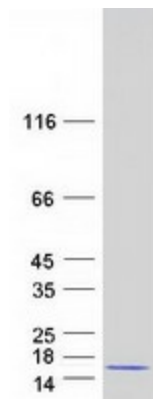
RefSeq ORF: 237

Synonyms: CKSHS2

**Summary:** CKS2 protein binds to the catalytic subunit of the cyclin dependent kinases and is essential for their biological function. The CKS2 mRNA is found to be expressed in different patterns through the cell cycle in HeLa cells, which reflects specialized role for the encoded protein. [provided by RefSeq, Jul 2008]

**Protein Families:** Druggable Genome, Stem cell - Pluripotency

### Product images:



Coomassie blue staining of purified CKS2 protein (Cat# TP300491). The protein was produced from HEK293T cells transfected with CKS2 cDNA clone (Cat# [RC200491]) using MegaTran 2.0 (Cat# [TT210002]).