

## Product datasheet for **TP300488M**

### Acidic Calponin (CNN3) (NM\_001839) Human Recombinant Protein

#### Product data:

|                       |  |
|-----------------------|--|
| Product Type:         | Recombinant Proteins   |
| Description:          | Recombinant protein of human calponin 3, acidic (CNN3), 100 µg |
| Species:              | Human  |
| Expression Host:      | HEK293T  |
| Expression cDNA       | >RC200488 protein sequence                                     |
| Clone or AA Sequence: | Red=Cloning site Green=Tags(s)                                 |

MTHFNKGPSYGLSAEVKNKIASKYDHQAEEDLRNWIEEVTGMSIGPNFQLGLKDGILCELINKLQPGSV  
KKVNESSLNWPQLENIGNFIKAIQAYGMKPHDIFEANDLFENGNMTQVQTTLVALAGLAKTKGFHTTIDI  
GVKYAEKQTRRFDEGKLKAGQSVIGLQMGTNKCASQAGMTAYGTRRHLYDPKMQTDKPFDQTTISLQMGT  
NKGASQAGMLAPGTRRDIYDQKLTLPVDNSTISLQMGTNKVASQKMSVYGLGRQVYDPKYCAAPTEPV  
IHNGSQGTGTNGSEISDSYQAEYPDEYHGEYQDDYPRDYQYSDQGIDY

TRTRPLEQKLISEEDLAANDILDYKDDDDKV

|                |  |
|----------------|--|
| Tag:           | C-Myc/DDK  |
| Predicted MW:  | 36.2 kDa   |
| Concentration: | >0.05 µg/µL as determined by microplate BCA method   |
| Purity:        | > 80% as determined by SDS-PAGE and Coomassie blue staining  |
| Buffer:        | 25 mM Tris-HCl, 100 mM glycine, pH 7.3, 10% glycerol   |
| Preparation:   | Recombinant protein was captured through anti-DDK affinity column followed by conventional chromatography steps.                                     |
| Note:          | For testing in cell culture applications, please filter before use. Note that you may experience some loss of protein during the filtration process. |
| Storage:       | Store at -80°C.  |
| Stability:     | Stable for 12 months from the date of receipt of the product under proper storage and handling conditions. Avoid repeated freeze-thaw cycles.        |
| RefSeq:        | <a href="#">NP_001830</a>  |
| Locus ID:      | 1266   |



[View online »](#)

UniProt ID: [Q15417](#)

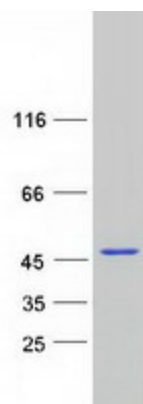
RefSeq Size: 2112

Cytogenetics: 1p21.3

RefSeq ORF: 987

**Summary:** This gene encodes a protein with a markedly acidic C terminus; the basic N-terminus is highly homologous to the N-terminus of a related gene, CNN1. Members of the CNN gene family all contain similar tandemly repeated motifs. This encoded protein is associated with the cytoskeleton but is not involved in contraction. [provided by RefSeq, Jul 2008]

### Product images:



Coomassie blue staining of purified CNN3 protein (Cat# [TP300488]). The protein was produced from HEK293T cells transfected with CNN3 cDNA clone (Cat# [RC200488]) using MegaTran 2.0 (Cat# [TT210002]).