

## Product datasheet for **TP300487**

### CNTF Receptor alpha (CNTFR) (NM\_147164) Human Recombinant Protein

#### Product data:

Product Type:	Recombinant Proteins
Description:	Recombinant protein of human ciliary neurotrophic factor receptor (CNTFR), transcript variant 1, 20 µg
Species:	Human
Expression Host:	HEK293T
Expression cDNA Clone or AA Sequence:	>RC200487 protein sequence <b>Red</b> =Cloning site <b>Green</b> =Tags(s)
	<p>MAAPVPWACCAVLAAAAAVVYAQRHSPQEAPHVQYERLGSDVTLPCGTANWDAAVTWRVNGTDLAPDL LN</p> <p>GSQVLVHGLELGHSGLYACFHRDSWHLRHQVLLHVGLPPREPVLSCRSNTYPKGFYCSWHLPTPTYIPNT FNVTVLHGSKIMVCEKDPALKNRCHIRYMHLFSTIKYKVSISVSNALGHNATAITFDEFTIVKPDPPENV VARPVPSNPRRLEVTWQTPSTWPDPEFPLKFFLRYPILDQWQHVELSDGTAHTITDAYAGKEYIIQV AAKDNEIGTWSWVAHAHATPWTEEPRLTTEAQAAETTTSTSSLAPPPTTKICDPGELGSGGGGPSAPF LVSVPITLALAAAAATASSLLI</p> <p><b>TRTRPLEQKLISEEDLAANDILDYKDDDDKV</b></p>
Tag:	C-Myc/DDK
Predicted MW:	38.7 kDa
Concentration:	>0.05 µg/µL as determined by microplate BCA method
Purity:	> 80% as determined by SDS-PAGE and Coomassie blue staining
Buffer:	25 mM Tris-HCl, 100 mM glycine, pH 7.3, 10% glycerol
Preparation:	Recombinant protein was captured through anti-DDK affinity column followed by conventional chromatography steps.
Note:	For testing in cell culture applications, please filter before use. Note that you may experience some loss of protein during the filtration process.
Storage:	Store at -80°C.
Stability:	Stable for 12 months from the date of receipt of the product under proper storage and handling conditions. Avoid repeated freeze-thaw cycles.



[View online »](#)

RefSeq: [NP\\_671693](#)

Locus ID: 1271

UniProt ID: [P26992](#)

RefSeq Size: 2070

Cytogenetics: 9p13.3

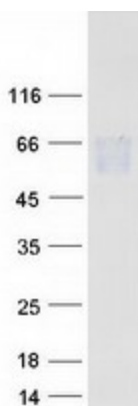
RefSeq ORF: 1116

**Summary:** This gene encodes a member of the type 1 cytokine receptor family. The encoded protein is the ligand-specific component of a tripartite receptor for ciliary neurotrophic factor, which plays a critical role in neuronal cell survival, differentiation and gene expression. Binding of ciliary neurotrophic factor to the encoded protein recruits the transmembrane components of the receptor, gp130 and leukemia inhibitory factor receptor, facilitating signal transduction. Single nucleotide polymorphisms in this gene may be associated with variations in muscle strength, as well as early onset of eating disorders. Alternatively spliced transcript variants have been observed for this gene. [provided by RefSeq, May 2011]

**Protein Families:** Druggable Genome

**Protein Pathways:** Cytokine-cytokine receptor interaction, Jak-STAT signaling pathway

## Product images:



Coomassie blue staining of purified CNTFR protein (Cat# TP300487). The protein was produced from HEK293T cells transfected with CNTFR cDNA clone (Cat# [RC200487]) using MegaTran 2.0 (Cat# [TT210002]).