

## Product datasheet for **TP300484M**

### CPT2 (NM\_000098) Human Recombinant Protein

#### Product data:

Product Type:	Recombinant Proteins
Description:	Recombinant protein of human carnitine palmitoyltransferase 2 (CPT2), nuclear gene encoding mitochondrial protein, 100 µg
Species:	Human
Expression Host:	HEK293T
Expression cDNA Clone or AA Sequence:	>RC200484 protein sequence <b>Red</b> =Cloning site <b>Green</b> =Tags(s)

MVPRLLLRAWPRGPAVGPAPSRPLSAGSGPGQYLQRSIVPTMHYQDSLPRLPPIPKLEDTIRRYLSAQKP  
LLNDGQFRKTEQFCKSFENGIGKELHEQLVALDKQNKHTSYILGPWFDMYLSARDSVVLNFPFMAFNPD  
PKSEYNDQLTRATNMTVSAIRFLKTLRAGLLEPEVFHLNPAKSDTITFKRLIRFVPSLSWYGAYLVNAY  
PLDMSQYFRLFNSTRLPKPSRDELFTDDKARHLLVLRKGNFYFDVLDQDGNIVSPSEIQAHLKYILSDS  
SPAPEFPLAYLTSENNDIWAELRQKLMSSGNEESLRKVDSAVFCLCLDDFPIKDLVHLSHNMHLHGDGTNR  
WFDKSFNLIIAKDGSTAIHFEHSWGDGVAVLRFFNEVFKDSTQTPAVTPQSQPATTDDSTVTVQKLNFE  
DALKTGITAAKEKFDATMKTLTIDCVQFQRGGKEFLKKQKLSPPDAVAQLAFQMAFLRQYGGTQVATYESCS  
TAAFKHGRTETIRPASVYTKRCSEAFVREPSRHSAGELQQMMVECSKYHGQLTKEAAMGGQGFDRHLFALR  
HLAAAKGIILPELYLDPAYGQINHNVLSTLSSPAVNLGGFAPVSDGFGVGYAVHDNWIGCNVSSYPG  
RNAREFLQCVEKALEDVFDALLEGKSIKS

**TRTRPLEQKLISEEDLAANDILDYKDDDDKV**

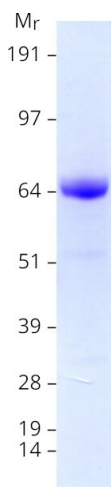
Tag:	C-Myc/DDK
Predicted MW:	71.1 kDa
Concentration:	>0.05 µg/µL as determined by microplate BCA method
Purity:	> 80% as determined by SDS-PAGE and Coomassie blue staining
Buffer:	25 mM Tris-HCl, 100 mM glycine, pH 7.3, 10% glycerol
Preparation:	Recombinant protein was captured through anti-DDK affinity column followed by conventional chromatography steps.
Note:	For testing in cell culture applications, please filter before use. Note that you may experience some loss of protein during the filtration process.
Storage:	Store at -80°C.



[View online »](#)

<b>Stability:</b>	Stable for 12 months from the date of receipt of the product under proper storage and handling conditions. Avoid repeated freeze-thaw cycles.
<b>RefSeq:</b>	<u>NP_000089</u>
<b>Locus ID:</b>	1376
<b>UniProt ID:</b>	<u>P23786, A0A140VK13</u>
<b>RefSeq Size:</b>	3110
<b>Cytogenetics:</b>	1p32.3
<b>RefSeq ORF:</b>	1974
<b>Synonyms:</b>	CPT1; CPTASE; IIAE4
<b>Summary:</b>	The protein encoded by this gene is a nuclear protein which is transported to the mitochondrial inner membrane. Together with carnitine palmitoyltransferase I, the encoded protein oxidizes long-chain fatty acids in the mitochondria. Defects in this gene are associated with mitochondrial long-chain fatty-acid (LCFA) oxidation disorders. [provided by RefSeq, Jul 2008]
<b>Protein Families:</b>	Druggable Genome
<b>Protein Pathways:</b>	Fatty acid metabolism, PPAR signaling pathway

### Product images:



Coomassie blue staining of purified CPT2 protein (Cat# [TP300484]). The protein was produced from HEK293T cells transfected with CPT2 cDNA clone (Cat# [RC200484]) using MegaTran 2.0 (Cat# [TT210002]).