

## Product datasheet for **TP300476M**

### **GALK1 (NM\_000154) Human Recombinant Protein**

#### Product data:

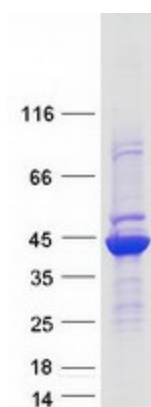
Product Type:	Recombinant Proteins
Description:	Recombinant protein of human galactokinase 1 (GALK1), 100 µg
Species:	Human
Expression Host:	HEK293T
Expression cDNA Clone or AA Sequence:	>RC200476 protein sequence <b>Red</b> =Cloning site <b>Green</b> =Tags(s)
	<p>MAALRQPQVAELLAEARRAFREFGAEP ELAVSAPGRVNLIGEHTDYNQGLVLPMALELMTVLVGS PRKD GLVSLTTSEGADEPQRLQFPLPTAQRSLEPGTPRWANYVKGVIQYYPAAPLPGFSAVVSSVPLGGGLS SSASLEVATYTFLLQQLCPDSGTIAARAQVCQQAHSFAGMPCGIMDQFISLMGQKGHALLIDCRSLETSL VPLSDPKLAVLITNSNVRHSLASSEYPVRRRQCEEVARALGKESLREVQLEELEAARDLVSKEGFRRARH VVG EIRRTAQAAAALRRGDYRAFGRMLVESHRSR RDDYEVSCEPDLQ LVEAALAVPGVYGS RMTGGGFGG CTVTLL EASAAPHAMRHIQEHYGGTATFYLSQAADGAKVLCL</p> <p><b>TRTRPLEQKLISEEDLAANDILDYKDDDDKV</b></p>
Tag:	C-Myc/DDK
Predicted MW:	42.1 kDa
Concentration:	>0.05 µg/µL as determined by microplate BCA method
Purity:	> 80% as determined by SDS-PAGE and Coomassie blue staining
Buffer:	25 mM Tris-HCl, 100 mM glycine, pH 7.3, 10% glycerol
Preparation:	Recombinant protein was captured through anti-DDK affinity column followed by conventional chromatography steps.
Note:	For testing in cell culture applications, please filter before use. Note that you may experience some loss of protein during the filtration process.
Storage:	Store at -80°C.
Stability:	Stable for 12 months from the date of receipt of the product under proper storage and handling conditions. Avoid repeated freeze-thaw cycles.
RefSeq:	<u><a href="#">NP_000145</a></u>
Locus ID:	2584



[View online »](#)

UniProt ID:	<a href="#">P51570</a> , <a href="#">V9HWE7</a>
RefSeq Size:	1361
Cytogenetics:	17q25.1
RefSeq ORF:	1176
Synonyms:	GALK; GK1; HEL-S-19
Summary:	Galactokinase is a major enzyme for the metabolism of galactose and its deficiency causes congenital cataracts during infancy and presenile cataracts in the adult population. [provided by RefSeq, Jul 2008]
Protein Families:	Druggable Genome
Protein Pathways:	Amino sugar and nucleotide sugar metabolism, Galactose metabolism, Metabolic pathways

### Product images:



Coomassie blue staining of purified GALK1 protein (Cat# [TP300476]). The protein was produced from HEK293T cells transfected with GALK1 cDNA clone (Cat# [RC200476]) using MegaTran 2.0 (Cat# [TT210002]).