

## Product datasheet for **TP300476**

### **GALK1 (NM\_000154) Human Recombinant Protein**

#### Product data:

**Product Type:** Recombinant Proteins  
**Description:** Recombinant protein of human galactokinase 1 (GALK1), 20 µg  
**Species:** Human  
**Expression Host:** HEK293T  
**Expression cDNA Clone or AA Sequence:** >RC200476 protein sequence  
**Red**=Cloning site **Green**=Tags(s)

MAALRQPQVAELLAEARRAFREFGAPELAVSAPGRVNLIGEHTDYNQGLVLPMALELMTVLVGSPrKD  
GLVSLTTSEGADEPQRLQFPLPTAQRSLEPGTPRWANYVKGVIQYYPAAPLPGFSAVVSSVPLGGGLS  
SSASLEVATYTFLLQQLCPDSGTIAARAQVCQQAHSFAGMPCGIMDQFISLMGQKGHALLIDCRSLETSL  
VPLSDPKLAVLITNSNVRHSLASSEYPVRRRQCEEVARALGKESLREVQLEELEAARDLVSKEGFRRARH  
VVG EIRRTAQAAAALRRGDYRAFGRLMVESHRSR RDDYEVSCELDQLVEAALAVPGVYGSRTGGGGFGG  
CTVTLLLEASAAPHAMRHIQEHYGGTATFYLSQAADGAKVLCL

**TRTRPLEQKLISEEDLAANDILDYKDDDDKV**

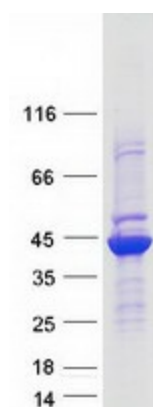
**Tag:** C-Myc/DDK  
**Predicted MW:** 42.1 kDa  
**Concentration:** >0.05 µg/µL as determined by microplate BCA method  
**Purity:** > 80% as determined by SDS-PAGE and Coomassie blue staining  
**Buffer:** 25 mM Tris-HCl, 100 mM glycine, pH 7.3, 10% glycerol  
**Preparation:** Recombinant protein was captured through anti-DDK affinity column followed by conventional chromatography steps.  
**Note:** For testing in cell culture applications, please filter before use. Note that you may experience some loss of protein during the filtration process.  
**Storage:** Store at -80°C.  
**Stability:** Stable for 12 months from the date of receipt of the product under proper storage and handling conditions. Avoid repeated freeze-thaw cycles.  
**RefSeq:** [NP\\_000145](#)  
**Locus ID:** 2584



[View online »](#)

UniProt ID:	<a href="#">P51570</a> , <a href="#">V9HWE7</a>
RefSeq Size:	1361
Cytogenetics:	17q25.1
RefSeq ORF:	1176
Synonyms:	GALK; GK1; HEL-S-19
Summary:	Galactokinase is a major enzyme for the metabolism of galactose and its deficiency causes congenital cataracts during infancy and presenile cataracts in the adult population. [provided by RefSeq, Jul 2008]
Protein Families:	Druggable Genome
Protein Pathways:	Amino sugar and nucleotide sugar metabolism, Galactose metabolism, Metabolic pathways

### Product images:



Coomassie blue staining of purified GALK1 protein (Cat# TP300476). The protein was produced from HEK293T cells transfected with GALK1 cDNA clone (Cat# [RC200476]) using MegaTran 2.0 (Cat# [TT210002]).