

## Product datasheet for TP300475

### GALK2 (NM\_002044) Human Recombinant Protein

#### Product data:

Product Type:	Recombinant Proteins
Description:	Recombinant protein of human galactokinase 2 (GALK2), transcript variant 1, 20 µg
Species:	Human
Expression Host:	HEK293T
Expression cDNA Clone or AA Sequence:	>RC200475 protein sequence <b>Red</b> =Cloning site <b>Green</b> =Tags(s)

MATESPATRRVQVAEHPRLKLEMFNSKFGSIPKFYVRAPGRVNIIGEHDYCGYSVLPMAVEQDVLIA  
VEPVKTYALQLANTNPLYPDFSTSANNIQIDKTKPLWHNYFLCGLKGIQEHFGLSNLTGMNCLVDGNIPP  
SSGLSSSSALVCCAGLVTLTVLGRNLSKVELAEICAKSERYIGTEGGMDQSI SFLAEEGTAKLIEFSPL  
RATDVKLPSGAVFVIANSCEMKAATSHFNIRVMECLAAKLLAKYKSLQWDKVLRL EEVQAKLGISLE  
EMLLVTEDALHPEPYNPEEICRCLGISLEELRTQILSPNTQDVLIFKLYQRAKHVYSEAAARVLQFKKICE  
EAPENMVQLLGELMNQSHMSCRDMYECSCPELDQLVDICRKFQAQGSRLTGAGWGGCTVSMVPADKL  
PSF  
LANVHKAYYQRS DGS LAPEKQSLFATKPGGGALV LLEA

**SGPTRTRPLEQKLISEEDLAANDILDYKDDDDKV**

Tag:	C-Myc/DDK
Predicted MW:	50.2 kDa
Concentration:	>0.05 µg/µL as determined by microplate BCA method
Purity:	> 80% as determined by SDS-PAGE and Coomassie blue staining
Buffer:	25 mM Tris-HCl, 100 mM glycine, pH 7.3, 10% glycerol
Preparation:	Recombinant protein was captured through anti-DDK affinity column followed by conventional chromatography steps.
Note:	For testing in cell culture applications, please filter before use. Note that you may experience some loss of protein during the filtration process.
Storage:	Store at -80°C.
Stability:	Stable for 12 months from the date of receipt of the product under proper storage and handling conditions. Avoid repeated freeze-thaw cycles.



[View online >](#)

RefSeq: [NP\\_002035](#)

Locus ID: 2585

UniProt ID: [Q01415](#)

RefSeq Size: 3330

Cytogenetics: 15q21.1-q21.2

RefSeq ORF: 1374

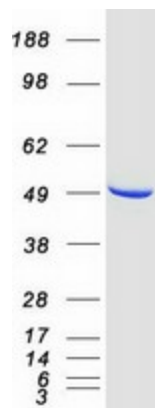
Synonyms: GK2

**Summary:** This gene encodes a highly efficient N-acetylgalactosamine (GalNAc) kinase, which has galactokinase activity when galactose is present at high concentrations. The encoded protein is a member of the GHMP kinase family. Alternative splicing results in multiple transcript variants. [provided by RefSeq, Jun 2017]

**Protein Families:** Druggable Genome

**Protein Pathways:** Amino sugar and nucleotide sugar metabolism, Galactose metabolism, Metabolic pathways

### Product images:



Coomassie blue staining of purified GALK2 protein (Cat# TP300475). The protein was produced from HEK293T cells transfected with GALK2 cDNA clone (Cat# [RC200475]) using MegaTran 2.0 (Cat# [TT210002]).