

## Product datasheet for **TP300469L**

### GRB2 (NM\_002086) Human Recombinant Protein

#### Product data:

Product Type:	Recombinant Proteins
Description:	Recombinant protein of human growth factor receptor-bound protein 2 (GRB2), transcript variant 1, 1 mg
Species:	Human
Expression Host:	HEK293T
Expression cDNA Clone or AA Sequence:	>RC200469 protein sequence <b>Red</b> =Cloning site <b>Green</b> =Tags(s)
	MEAIKYDFKATADDELSFKRGDILKVLNEECDQNWYKAELNGKDGFIKPKNYIEMKPHPWFFGKIPRAKA EEMLSKQRHDGAFLIRESESAPGDFLSVKFGNDVQHFKVLRDAGAGKYFLWVVKFNSLNLVDYHRSTSV SRNQIQLRDIEQVPQQPTYVQALFDFDPQEDGELGFRRGDFIHVMDNSDPNWWKGACHGQTMFPRNY TPVNRNV
	<b>TRTRPLEQKLISEEDLAANDILDYKDDDDKV</b>
Tag:	C-Myc/DDK
Predicted MW:	25 kDa
Concentration:	>0.05 µg/µL as determined by microplate BCA method
Purity:	> 80% as determined by SDS-PAGE and Coomassie blue staining
Buffer:	25 mM Tris-HCl, 100 mM glycine, pH 7.3, 10% glycerol
Preparation:	Recombinant protein was captured through anti-DDK affinity column followed by conventional chromatography steps.
Note:	For testing in cell culture applications, please filter before use. Note that you may experience some loss of protein during the filtration process.
Storage:	Store at -80°C.
Stability:	Stable for 12 months from the date of receipt of the product under proper storage and handling conditions. Avoid repeated freeze-thaw cycles.
RefSeq:	<a href="#">NP_002077</a>
Locus ID:	2885



[View online »](#)

UniProt ID: [P62993](#), [B0LPF3](#)

RefSeq Size: 3303

Cytogenetics: 17q25.1

RefSeq ORF: 651

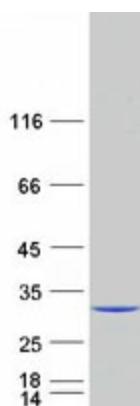
Synonyms: ASH; EGFRBP-GRB2; Grb3-3; MST084; MSTP084; NCKAP2

**Summary:** The protein encoded by this gene binds the epidermal growth factor receptor and contains one SH2 domain and two SH3 domains. Its two SH3 domains direct complex formation with proline-rich regions of other proteins, and its SH2 domain binds tyrosine phosphorylated sequences. This gene is similar to the Sem5 gene of *C.elegans*, which is involved in the signal transduction pathway. Two alternatively spliced transcript variants encoding different isoforms have been found for this gene. [provided by RefSeq, Jul 2008]

**Protein Families:** Druggable Genome

**Protein Pathways:** Acute myeloid leukemia, B cell receptor signaling pathway, Chemokine signaling pathway, Chronic myeloid leukemia, Colorectal cancer, Dorso-ventral axis formation, Endometrial cancer, ErbB signaling pathway, Fc epsilon RI signaling pathway, Focal adhesion, Gap junction, Glioma, GnRH signaling pathway, Insulin signaling pathway, Jak-STAT signaling pathway, MAPK signaling pathway, Natural killer cell mediated cytotoxicity, Neurotrophin signaling pathway, Non-small cell lung cancer, Pathways in cancer, Prostate cancer, Renal cell carcinoma, T cell receptor signaling pathway

### Product images:



Coomassie blue staining of purified GRB2 protein (Cat# [TP300469]). The protein was produced from HEK293T cells transfected with GRB2 cDNA clone (Cat# [RC200469]) using MegaTran 2.0 (Cat# [TT210002]).