

Product datasheet for TP300450

NAPG (NM_003826) Human Recombinant Protein

Product data:

Product Type:	Recombinant Proteins
Description:	Recombinant protein of human N-ethylmaleimide-sensitive factor attachment protein, gamma (NAPG), 20 µg
Species:	Human
Expression Host:	HEK293T
Expression cDNA Clone or AA Sequence:	>RC200450 protein sequence Red =Cloning site Green =Tags(s)

MAAQKINEGLEHLAKAEKYLKTGFLKWKPDYDSAASEYGKAAVAFKNAKQFEQAKDAACLREAVAHENNRA
LFHAAKAYEQAGMMLKEMQKLPEAVQLIEKASMMYLENGTPDTAAMALERAGKLIENVDPKAVQLYQQT
ANVFENDERLRQAVELLGKASRLLRGRRFDEAALSISQKEKNIYKEIENYPTCYKKTIAQVLVHLHRNDY
VAAERCVRESYSIPGFNGSEDCAALEQLLEGYDQDQDQVSDVCNSPLFKYMDNDYAKLGLSLVPPGGGI
KKKSPATPQAKPDGVTATAADEEEDEYSGLC

TRTRPLEQKLISEEDLAANDILDYKDDDDKV

Tag:	C-Myc/DDK
Predicted MW:	34.6 kDa
Concentration:	>0.05 µg/µL as determined by microplate BCA method
Purity:	> 80% as determined by SDS-PAGE and Coomassie blue staining
Buffer:	25 mM Tris-HCl, 100 mM glycine, pH 7.3, 10% glycerol
Preparation:	Recombinant protein was captured through anti-DDK affinity column followed by conventional chromatography steps.
Note:	For testing in cell culture applications, please filter before use. Note that you may experience some loss of protein during the filtration process.
Storage:	Store at -80°C.
Stability:	Stable for 12 months from the date of receipt of the product under proper storage and handling conditions. Avoid repeated freeze-thaw cycles.
RefSeq:	NP_003817
Locus ID:	8774



[View online »](#)

UniProt ID: [Q99747](#), [Q6FHY4](#)

RefSeq Size: 3729

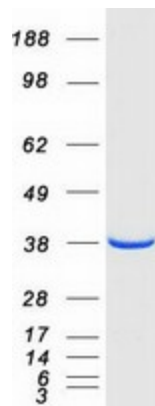
Cytogenetics: 18p11.22

RefSeq ORF: 936

Synonyms: GAMMASNAP

Summary: This gene encodes soluble NSF attachment protein gamma. The soluble NSF attachment proteins (SNAPs) enable N-ethyl-maleimide-sensitive fusion protein (NSF) to bind to target membranes. NSF and SNAPs appear to be general components of the intracellular membrane fusion apparatus, and their action at specific sites of fusion must be controlled by SNAP receptors particular to the membranes being fused. The product of this gene mediates platelet exocytosis and controls the membrane fusion events of this process.[provided by RefSeq, Dec 2008]

Product images:



Coomassie blue staining of purified NAPG protein (Cat# TP300450). The protein was produced from HEK293T cells transfected with NAPG cDNA clone (Cat# [RC200450]) using MegaTran 2.0 (Cat# [TT210002]).