

## Product datasheet for **TP300446L**

### OGDH (NM\_002541) Human Recombinant Protein

#### Product data:

Product Type:	Recombinant Proteins
Description:	Recombinant protein of human oxoglutarate (alpha-ketoglutarate) dehydrogenase (lipoamide) (OGDH), nuclear gene encoding mitochondrial protein, transcript variant 1, 1 mg
Species:	Human
Expression Host:	HEK293T
Expression cDNA	>RC200446 protein sequence
Clone or AA Sequence:	Red=Cloning site Green=Tags(s)

MFHLRTCAAKLRPLTASQTVKTFNQNRPAARTFQQIRCYSAPVAAEPFLSGTSSNYVEEMYCAWLENPK  
SVHKSWDIFFRNTNAGAPPGTAYQSPLPLSRGSLAAVAHAQSLVEAQPNDKLVEDHLAVQSLIRAYQIR  
GHHVAQLDPLGILDADLDSSVPADIISSTDKLGFYGLDESDLDKVFHLPTTTFIGGQESALPLREIIRRL  
EMAYCQHIGVEFMFINDLEQCQWIRQKFETPGIMQFTNEEKRTLLARLVRSTRFEELQRKWSSEKRFGL  
EGCEVLIPALKTIIDKSENGVDYVIMGMPHRGRLNVLNVIRKELEQIFCQFDSKLEAADEGSGDVKYH  
LGMYHRRINRVTDNRNITLSLVANPSHLEAADPVVMGKTKAEQFYCGDTEGKKVMSILLHGDAAFAGQGIV  
YETFHLSDLPSYTTHTGTVHVVNNQIGFTTDPMARSSPYPTDVARVNAPIFHVNSDDPEAVMYVCKVA  
AEWRSTFHKDVVWDLVCYRRNGHNEMDEPMFTQPLMYKQIRKQKPVLLQKYAELLVSQGVVNPPEYEEIIS  
KYDKICEAFARSKDEKILHIKHWLDSPWPGFFTLDGQPRSMSCPSTGLTEDILTHIGNVASSVPVENFT  
IHGGLSRILKTRGEMVKNRTVDWALAEYMAFGSLLKEGIHIRLSGQDVERGTFSHRHHVLDQNVDKRTC  
IPMNHLWPNQAPYTVCNSSLSEYGVLFELGFAMASPNALVLWEAQFGDFHNTAQCIIDQFICPGQAKWV  
RQNGIVLLLPHGMEGMGPEHSSARPERFLQMCNDDPDVLPDLKEANFDINQLYDCNWWVNCSTPGNFFH  
VLRQILLPFRKPLIIFTPKSLLRHPEARSSFDEMLPGTHFQRVIPEDGPAAQNPENVKRLLFCTGKVVY  
DLTRERKARDMVGQVAITRIEQLSPFPDLLLLKEVQKYPNAELAWCQEEHKNQGYDYVKPRLRTTISR  
KPVWYAGRDPAAAPATGNKKTHTLTELQRLDADFDDVFNFS

TRTRPLEQKLISEEDLAANDILDYKDDDDKV

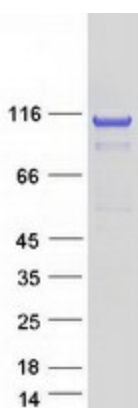
Tag:	C-Myc/DDK
Predicted MW:	111.3 kDa
Concentration:	>0.05 µg/µL as determined by microplate BCA method
Purity:	> 80% as determined by SDS-PAGE and Coomassie blue staining
Buffer:	25 mM Tris-HCl, 100 mM glycine, pH 7.3, 10% glycerol



[View online »](#)

<b>Preparation:</b>	Recombinant protein was captured through anti-DDK affinity column followed by conventional chromatography steps.
<b>Note:</b>	For testing in cell culture applications, please filter before use. Note that you may experience some loss of protein during the filtration process.
<b>Storage:</b>	Store at -80°C.
<b>Stability:</b>	Stable for 12 months from the date of receipt of the product under proper storage and handling conditions. Avoid repeated freeze-thaw cycles.
<b>RefSeq:</b>	<a href="#">NP_002532</a>
<b>Locus ID:</b>	4967
<b>UniProt ID:</b>	<a href="#">Q02218</a> , <a href="#">B4E3E9</a>
<b>RefSeq Size:</b>	4319
<b>Cytogenetics:</b>	7p13
<b>RefSeq ORF:</b>	3069
<b>Synonyms:</b>	AKGDH; E1k; KGD1; OGDC; OGDH2
<b>Summary:</b>	This gene encodes one subunit of the 2-oxoglutarate dehydrogenase complex. This complex catalyzes the overall conversion of 2-oxoglutarate (alpha-ketoglutarate) to succinyl-CoA and CO <sub>2</sub> during the Krebs cycle. The protein is located in the mitochondrial matrix and uses thiamine pyrophosphate as a cofactor. A congenital deficiency in 2-oxoglutarate dehydrogenase activity is believed to lead to hypotonia, metabolic acidosis, and hyperlactatemia. Alternative splicing results in multiple transcript variants encoding distinct isoforms.[provided by RefSeq, Sep 2009]
<b>Protein Families:</b>	Druggable Genome
<b>Protein Pathways:</b>	Citrate cycle (TCA cycle), Lysine degradation, Metabolic pathways, Tryptophan metabolism

### Product images:



Coomassie blue staining of purified OGDH protein (Cat# [TP300446]). The protein was produced from HEK293T cells transfected with OGDH cDNA clone (Cat# [RC200446]) using MegaTran 2.0 (Cat# [TT210002]).