

Product datasheet for **TP300446**

OGDH (NM_002541) Human Recombinant Protein

Product data:

Product Type:	Recombinant Proteins
Description:	Recombinant protein of human oxoglutarate (alpha-ketoglutarate) dehydrogenase (lipoamide) (OGDH), nuclear gene encoding mitochondrial protein, transcript variant 1, 20 µg
Species:	Human
Expression Host:	HEK293T
Expression cDNA	>RC200446 protein sequence
Clone or AA Sequence:	Red=Cloning site Green=Tags(s)

MFHLRTCAAKLRPLTASQTVKTFQNRPAARTFQIRCYAPVAAEPFLSGTSSNYVEEMYCAWLENPK
SVHKSWDIFFRNTNAGAPPGTAYQSPLPLSRGSLAAVAHAQSLVEAQPNDKLVEDHLAVQSLIRAYQIR
GHHVAQLDPLGILDADLDSSVPADIISSTDKLGFYGLDESDLDKVFHLPTTTFIGGQESALPLREIIRRL
EMAYCQHIGVEFMFINDLEQCQWIRQKFETPGIMQFTNEEKRTLLARLVRSTRFEELQRKWSSEKRFGL
EGCEVLIPALKTIIDKSENGVDYVIMGMPHRGRLNVLNVIRKELEQIFCQFDSKLEAADEGSGDVKYH
LGMYHRRINRVTDNRNITLSLVANPSHLEAADPVVMGKTKAEQFYCGDTEGKKVMSILLHGDAAFAGQGIV
YETFHLSDLPSYTTHTGTVHVVNINQIGFTTDPMARSSPYPTDVARVNAPIFHVNSDDPEAVMYVCKVA
AEWRSTFHKDVVWDLVCYRRNGHNEMDEPMFTQPLMYKQIRKQKPVLLQKYAELLVSQGVVNPPEYEEIIS
KYDKICEAFARSKDEKILHIKHWLDSPWPGFFTLDGQPRSMSCPSTGLTEDILTHIGNVASSVPVENFT
IHGGLSRILKTRGEMVKNRTVDWALAEYMAFGSLLKEGIHIRLSGQDVERGTFSHRHHVLDQNVDKRTC
IPMNHLWPNQAPYTVCNSSLSEYGLVGFELGFAMASPNALVLWEAQFGDFHNTAQCIIDQFICPGQAKWV
RQNGIVLLLPHGMEGMGPEHSSARPERFLQMCNDDPDVLPDLKEANFDINQLYDCNWWVNCSTPGNFFH
VLRQILLPFRKPLIIFTPKSLLRHPEARSSFDEMLPGTHFQRVIPEDGPAAQNPENVKRLLFCTGKVVY
DLTRERKARDMVGQVAITRIEQLSPFPDLLLLKEVQKYPNAELAWCQEEHKNQGYDYVKPRLRTTISR
KPVWYAGRDPAAPATGNKKTHTLTELQRLDPTAFDLDFKFNFS

TRTRPLEQKLISEEDLAANDILDYKDDDDKV

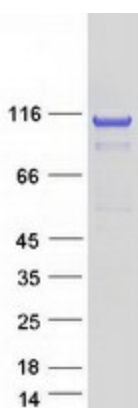
Tag:	C-Myc/DDK
Predicted MW:	111.3 kDa
Concentration:	>0.05 µg/µL as determined by microplate BCA method
Purity:	> 80% as determined by SDS-PAGE and Coomassie blue staining
Buffer:	25 mM Tris-HCl, 100 mM glycine, pH 7.3, 10% glycerol



[View online »](#)

Preparation:	Recombinant protein was captured through anti-DDK affinity column followed by conventional chromatography steps.
Note:	For testing in cell culture applications, please filter before use. Note that you may experience some loss of protein during the filtration process.
Storage:	Store at -80°C.
Stability:	Stable for 12 months from the date of receipt of the product under proper storage and handling conditions. Avoid repeated freeze-thaw cycles.
RefSeq:	NP_002532
Locus ID:	4967
UniProt ID:	Q02218 , B4E3E9
RefSeq Size:	4319
Cytogenetics:	7p13
RefSeq ORF:	3069
Synonyms:	AKGDH; E1k; KGD1; OGDC; OGDH2
Summary:	This gene encodes one subunit of the 2-oxoglutarate dehydrogenase complex. This complex catalyzes the overall conversion of 2-oxoglutarate (alpha-ketoglutarate) to succinyl-CoA and CO ₂ during the Krebs cycle. The protein is located in the mitochondrial matrix and uses thiamine pyrophosphate as a cofactor. A congenital deficiency in 2-oxoglutarate dehydrogenase activity is believed to lead to hypotonia, metabolic acidosis, and hyperlactatemia. Alternative splicing results in multiple transcript variants encoding distinct isoforms.[provided by RefSeq, Sep 2009]
Protein Families:	Druggable Genome
Protein Pathways:	Citrate cycle (TCA cycle), Lysine degradation, Metabolic pathways, Tryptophan metabolism

Product images:



Coomassie blue staining of purified OGDH protein (Cat# TP300446). The protein was produced from HEK293T cells transfected with OGDH cDNA clone (Cat# [RC200446]) using MegaTran 2.0 (Cat# [TT210002]).