

Product datasheet for **TP300442L**

PLCG 2 (PLCG2) (NM_002661) Human Recombinant Protein

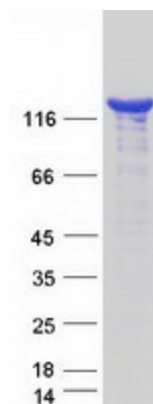
Product data:

Product Type:	Recombinant Proteins
Description:	Recombinant protein of human phospholipase C, gamma 2 (phosphatidylinositol-specific) (PLCG2), 1 mg
Species:	Human
Expression Host:	HEK293T
Expression cDNA Clone or AA Sequence:	>RC200442 protein sequence Red =Cloning site Green =Tags(s)
	<p>MSTTVNVDSLAEYEKSIKRALELGTVMTVFSFRKSTPERRTVQVIMETRQVAWSKTADKIEGFLDIMEI KEIRPGKNSKDFERAKAVRQKEDCCFTILYGTQFVLSTLSLAADSKEDAVNWLSGLKILHQEAMNASTPT IIESWLKQIYSVDQTRRNSISLRELKILPLINFKVSSAKFLKDKFVEIGAHKDELSEFQFHLFYKCLM FEQQKSILDEFKKDSSVFILGNTDRPDASAVYLRDFQRFLIHEQQEHWAQDLNKNVREMTKFIDDTMRET AEPFLVDFELTYLFSRENSIWDEKYDAVDMQDMNPLSHYWISSSHNTYLTGDQLRSESSPEAYIRCLR MGCRCIELDCWDGPDGKPVYHGWTRTTKIKFDDVVAIKDHAFVTSSFPVILSIEEHCSVEQQRHMAKA FKEVFGDLLLTKPTEASADQLPSPQLREKIIKHKKLGRGDVDVNMEDKKDEHKQQGELYMWDSIDQK WTRHYCAIADAKLSFSDDIEQTMEEVPQDIPPTTELHFGKWFHKKVEKRTSAEKLLQEYCMETGGKDG FLVRESETFPNDYTLFWRSGRVQHCRIRSTMEGGTLKYYLTDNLTFSSYALIQHYRETHLRCAEFELR LTDVPVNPNPHEKSPWYYDSLRSGEAEDMLMRIPRDGAFLIRKREGSDSYAITFRARGKVKHCRINRDRG HFVLGTSAYFESLVELVSYYEKHSLYRKMRLRYPVTPPELLERYNMERDINSYDVSVMYVDPSEINPSPM QRTVKALYDYKAKRSELSFCRGALIHNVSKEPGGWWKGDYGTIRIQYFSPNYVEDISTADFEELKQII EDNPLGSLCRGILDNLNTYNVVKAPQGKNQKSFVFILEPKQQGYPPVEFATDRVEELFEWFQSIREITWKI DTKENNMKYWEKNQSAIELSDLVYCKPTSKTKDNLENPDFREIRSFVETKADSIIRKQKPVDLLKYNQK GLTRVYPKGQRVDSSNYDPFRLWLCGSQMVALNFQTADKYMQMNHALFSLNNGRTGYVLQPEMSMRTEKYDP MPPESQRKILMTLTVKVLGARHLPKLGSIACPFVEVEICGAEYDNNKFKTTVNDNGLSPIWAPTQEKV TFEYDPNLAFLRFWYEEDMFSDPNFLAHATYPIKAVKSGFRSVPLKNGYSEDIELASLLVFCEMRPVL ESEEELYSSCRQLRRRQEELNNQLFLYDTHQNLNRNANRDALVKEFSVNEQLQLYQEKCNKRLREKRVSN SKFYS</p> <p>TRTRPLEQKLISEEDLAANDILDYKDDDDKV</p>
Tag:	C-Myc/DDK
Predicted MW:	147.7 kDa



[View online »](#)

Concentration:	>0.05 µg/µL as determined by microplate BCA method
Purity:	> 80% as determined by SDS-PAGE and Coomassie blue staining
Buffer:	25 mM Tris-HCl, 100 mM glycine, pH 7.3, 10% glycerol
Preparation:	Recombinant protein was captured through anti-DDK affinity column followed by conventional chromatography steps.
Note:	For testing in cell culture applications, please filter before use. Note that you may experience some loss of protein during the filtration process.
Storage:	Store at -80°C.
Stability:	Stable for 12 months from the date of receipt of the product under proper storage and handling conditions. Avoid repeated freeze-thaw cycles.
RefSeq:	NP_002652
Locus ID:	5336
UniProt ID:	P16885
RefSeq Size:	8707
Cytogenetics:	16q23.3
RefSeq ORF:	3795
Synonyms:	APLAID; FCAS3; PLC-gamma-2; PLC-IV
Summary:	The protein encoded by this gene is a transmembrane signaling enzyme that catalyzes the conversion of 1-phosphatidyl-1D-myo-inositol 4,5-bisphosphate to 1D-myo-inositol 1,4,5-trisphosphate (IP3) and diacylglycerol (DAG) using calcium as a cofactor. IP3 and DAG are second messenger molecules important for transmitting signals from growth factor receptors and immune system receptors across the cell membrane. Mutations in this gene have been found in autoinflammation, antibody deficiency, and immune dysregulation syndrome and familial cold autoinflammatory syndrome 3. [provided by RefSeq, Mar 2014]
Protein Families:	Druggable Genome
Protein Pathways:	B cell receptor signaling pathway, Calcium signaling pathway, Epithelial cell signaling in Helicobacter pylori infection, ErbB signaling pathway, Fc epsilon RI signaling pathway, Fc gamma R-mediated phagocytosis, Glioma, Inositol phosphate metabolism, Leukocyte transendothelial migration, Metabolic pathways, Natural killer cell mediated cytotoxicity, Neurotrophin signaling pathway, Non-small cell lung cancer, Pathways in cancer, Phosphatidylinositol signaling system, VEGF signaling pathway, Vibrio cholerae infection

Product images:

Coomassie blue staining of purified PLCG2 protein (Cat# [TP300442]). The protein was produced from HEK293T cells transfected with PLCG2 cDNA clone (Cat# [RC200442]) using MegaTran 2.0 (Cat# [TT210002]).