

## Product datasheet for **TP300439M**

### PPM1G (NM\_002707) Human Recombinant Protein

#### Product data:

Product Type:	Recombinant Proteins
Description:	Recombinant protein of human protein phosphatase 1G (formerly 2C), magnesium-dependent, gamma isoform (PPM1G), transcript variant 2, 100 µg
Species:	Human
Expression Host:	HEK293T
Expression cDNA Clone or AA Sequence:	>RC200439 protein sequence <b>Red</b> =Cloning site <b>Green</b> =Tags(s)

MGAYLSQPNTVKCSGDGVGAPRLPLPYGFSAMQGWVSMEDAHNCIPELDSETAMFSVYDGHGGEEVALY  
CAKYLVDIHKDQKAYKEGKLGKALEDAFLAIDAKLTTEEVIKELAQIAGRPTEDDEKEKVADEDDVDNE  
EAALLHEEATMTIEELLTRYGQNCHKGPPHSKSGGGTGEEPGSQGLNGEAGPEDSTRETSPQENGPTAKA  
YTGFSNSERGTGAEQVGEPIGTGEAGPSCSSASDKLPRVAKSKFFEDSEDESDEAEEDDEEEDS  
EDGYSSEEAENEDEDDTEEAEDDEEEEMMVPGMGKKEEPPGSDSGTTAVVALIRGKQLIVANAGDSR  
CVVSEAGKALDMSYDHPKPEDEVELARIKNAGGKVTMDGRVNGGLNLSRAIGDHFYKRNKLPPEEQMISA  
LPDIKVLTLTDDHEFMVIACDGIWNVMSSEVDFIQSKISQRDENGELRLLSSIVEELLQCLAPDTSG  
DGTGCDNMTCIICFKPRNTAELQPESGKRKLEEVLPSTEGAEENGNSDKKKKAKRD

**TRTRPLEQKLISEEDLAANDILDYKDDDDKV**

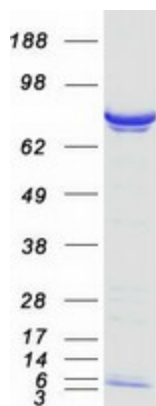
Tag:	C-Myc/DDK
Predicted MW:	59.1 kDa
Concentration:	>0.05 µg/µL as determined by microplate BCA method
Purity:	> 80% as determined by SDS-PAGE and Coomassie blue staining
Buffer:	25 mM Tris-HCl, 100 mM glycine, pH 7.3, 10% glycerol
Preparation:	Recombinant protein was captured through anti-DDK affinity column followed by conventional chromatography steps.
Note:	For testing in cell culture applications, please filter before use. Note that you may experience some loss of protein during the filtration process.
Storage:	Store at -80°C.



[View online »](#)

<b>Stability:</b>	Stable for 12 months from the date of receipt of the product under proper storage and handling conditions. Avoid repeated freeze-thaw cycles.
<b>RefSeq:</b>	<a href="#">NP_002698</a>
<b>Locus ID:</b>	5496
<b>UniProt ID:</b>	<a href="#">O15355</a>
<b>RefSeq Size:</b>	2302
<b>Cytogenetics:</b>	2p23.3
<b>RefSeq ORF:</b>	1638
<b>Synonyms:</b>	MGC1675; MGC2870; PP2CG; PP2CGAMMA; PPP2CG
<b>Summary:</b>	The protein encoded by this gene is a member of the PP2C family of Ser/Thr protein phosphatases. PP2C family members are known to be negative regulators of cell stress response pathways. This phosphatase is found to be responsible for the dephosphorylation of Pre-mRNA splicing factors, which is important for the formation of functional spliceosome. Studies of a similar gene in mice suggested a role of this phosphatase in regulating cell cycle progression. [provided by RefSeq, Apr 2010]
<b>Protein Families:</b>	Druggable Genome, Phosphatase

### Product images:



Coomassie blue staining of purified PPM1G protein (Cat# [TP300439]). The protein was produced from HEK293T cells transfected with PPM1G cDNA clone (Cat# [RC200439]) using MegaTran 2.0 (Cat# [TT210002]).