

Product datasheet for **TP300439L**

PPM1G (NM_002707) Human Recombinant Protein

Product data:

Product Type:	Recombinant Proteins
Description:	Recombinant protein of human protein phosphatase 1G (formerly 2C), magnesium-dependent, gamma isoform (PPM1G), transcript variant 2, 1 mg
Species:	Human
Expression Host:	HEK293T
Expression cDNA Clone or AA Sequence:	>RC200439 protein sequence Red =Cloning site Green =Tags(s)

MGAYLSQPNTVKCSGDG V G A P R L P L P Y G F S A M Q G W R V S M E D A H N C I P E L D S E T A M F S V Y D G H G G E E V A L Y
C A K Y L P D I I K D Q K A Y K E G K L Q K A L E D A F L A I D A K L T T E E V I K E L A Q I A G R P T E D E D E K E V A D E D D V D N E
E A A L L H E E A T M T I E L L T R Y G Q N C H K G P P H S K S G G G T G E E P G S Q G L N G E A G P E D S T R E T P S Q E N G P T A K A
Y T G F S S N S E R G T E A G Q V G E P G I P T G E A G P S C S S A S D K L P R V A K S K F F E D S E D E S D E A E E E E E D S E E C S E E
E D G Y S S E E A E N E E D D T E E A E E D D E E E E E M M V P G M E G K E E P G S D S G T T A V W A L I R G K Q L I V A N A G D S R
C V V S E A G K A L D M S Y D H K P E D E V E L A R I K N A G G K V T M D G R V N G G L N L S R A I G D H F Y K R N K N L P P E E Q M I S A
L P D I K V L T L T D D H E F M V I A C D G I W N V M S S Q E V W D F I Q S K I S Q R D E N G E L R L L S S I V E E L L D Q C L A P D T S G
D G T G C D N M T C I I C F K P R N T A E L Q P E S G K R K L E E V L S T E G A E E N G S D K K K K A K R D

TRTRPLEQKLISEEDLAANDILDYKDDDDKV

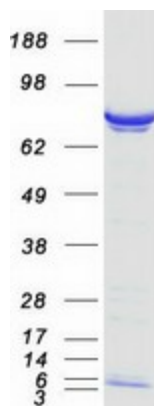
Tag:	C-Myc/DDK
Predicted MW:	59.1 kDa
Concentration:	>0.05 µg/µL as determined by microplate BCA method
Purity:	> 80% as determined by SDS-PAGE and Coomassie blue staining
Buffer:	25 mM Tris-HCl, 100 mM glycine, pH 7.3, 10% glycerol
Preparation:	Recombinant protein was captured through anti-DDK affinity column followed by conventional chromatography steps.
Note:	For testing in cell culture applications, please filter before use. Note that you may experience some loss of protein during the filtration process.
Storage:	Store at -80°C.



[View online »](#)

Stability:	Stable for 12 months from the date of receipt of the product under proper storage and handling conditions. Avoid repeated freeze-thaw cycles.
RefSeq:	NP_002698
Locus ID:	5496
UniProt ID:	O15355
RefSeq Size:	2302
Cytogenetics:	2p23.3
RefSeq ORF:	1638
Synonyms:	MGC1675; MGC2870; PP2CG; PP2CGAMMA; PPP2CG
Summary:	The protein encoded by this gene is a member of the PP2C family of Ser/Thr protein phosphatases. PP2C family members are known to be negative regulators of cell stress response pathways. This phosphatase is found to be responsible for the dephosphorylation of Pre-mRNA splicing factors, which is important for the formation of functional spliceosome. Studies of a similar gene in mice suggested a role of this phosphatase in regulating cell cycle progression. [provided by RefSeq, Apr 2010]
Protein Families:	Druggable Genome, Phosphatase

Product images:



Coomassie blue staining of purified PPM1G protein (Cat# [TP300439]). The protein was produced from HEK293T cells transfected with PPM1G cDNA clone (Cat# [RC200439]) using MegaTran 2.0 (Cat# [TT210002]).