

Product datasheet for **TP300439**

PPM1G (NM_002707) Human Recombinant Protein

Product data:

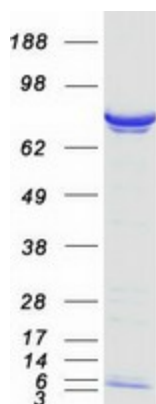
Product Type:	Recombinant Proteins
Description:	Recombinant protein of human protein phosphatase 1G (formerly 2C), magnesium-dependent, gamma isoform (PPM1G), transcript variant 2
Species:	Human
Expression Host:	HEK293T
Tag:	C-Myc/DDK
Predicted MW:	59.1 kDa
Concentration:	>50 ug/mL as determined by microplate BCA method
Purity:	> 80% as determined by SDS-PAGE and Coomassie blue staining
Buffer:	25 mM Tris.HCl, pH 7.3, 100 mM glycine, 10% glycerol
Preparation:	Recombinant protein was captured through anti-DDK affinity column followed by conventional chromatography steps.
Storage:	Store at -80°C.
Stability:	Stable for 12 months from the date of receipt of the product under proper storage and handling conditions. Avoid repeated freeze-thaw cycles.
RefSeq:	NP_002698
Locus ID:	5496
RefSeq Size:	2302
Cytogenetics:	2p23.3
RefSeq ORF:	1638
Synonyms:	MGC1675; MGC2870; PP2CG; PP2CGAMMA; PPP2CG
Summary:	The protein encoded by this gene is a member of the PP2C family of Ser/Thr protein phosphatases. PP2C family members are known to be negative regulators of cell stress response pathways. This phosphatase is found to be responsible for the dephosphorylation of Pre-mRNA splicing factors, which is important for the formation of functional spliceosome. Studies of a similar gene in mice suggested a role of this phosphatase in regulating cell cycle progression. [provided by RefSeq, Apr 2010]



[View online »](#)

Protein Families: Druggable Genome, Phosphatase

Product images:



Coomassie blue staining of purified PPM1G protein (Cat# TP300439). The protein was produced from HEK293T cells transfected with PPM1G cDNA clone (Cat# [RC200439]) using MegaTran 2.0 (Cat# [TT210002]).