

Product datasheet for **TP300433L**

Rab2 (RAB2A) (NM_002865) Human Recombinant Protein

Product data:

Product Type: Recombinant Proteins

Description: Recombinant protein of human RAB2A, member RAS oncogene family (RAB2A), 1 mg

Species: Human

Expression Host: HEK293T

**Expression cDNA Clone
or AA Sequence:** >RC200433 protein sequence
Red=Cloning site **Green**=Tags(s)

MAYAYLFKYIIIGDTGVGKSCLLLQFTDKRFQPVHDLTIGVEFGARMITIDGKQIKLQIWDTAGQESFRS
ITRSYYRGAAGALLVYDITRRDTFNHLTTWLEDARQHSNSNMVIMLIGNKSDLESRRREVKKEEGEAFARE
HGLIFMETSAKTASNVEEAFINTAKEIYEKIQEGVFDINNEANGIKIGPQHAATNATHAGNQQGGQQAGGG
CC

TRTRPLEQKLISEEDLAANDILDYKDDDDKV

Tag: C-Myc/DDK

Predicted MW: 23.4 kDa

Concentration: >0.05 µg/µL as determined by microplate BCA method

Purity: > 80% as determined by SDS-PAGE and Coomassie blue staining

Buffer: 25 mM Tris-HCl, 100 mM glycine, pH 7.3, 10% glycerol

Preparation: Recombinant protein was captured through anti-DDK affinity column followed by conventional chromatography steps.

Note: For testing in cell culture applications, please filter before use. Note that you may experience some loss of protein during the filtration process.

Storage: Store at -80°C.

Stability: Stable for 12 months from the date of receipt of the product under proper storage and handling conditions. Avoid repeated freeze-thaw cycles.

RefSeq: [NP_002856](#)

Locus ID: 5862

UniProt ID: [P61019](#), [A0A024R7V6](#)



[View online »](#)

RefSeq Size: 3812

Cytogenetics: 8q12.1-q12.2

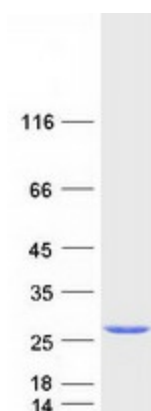
RefSeq ORF: 636

Synonyms: LHX; RAB2

Summary: The protein encoded by this gene belongs to the Rab family, members of which are small molecular weight guanosine triphosphatases (GTPases) that contain highly conserved domains involved in GTP binding and hydrolysis. The Rabs are membrane-bound proteins, involved in vesicular fusion and trafficking. This protein is a resident of pre-Golgi intermediates, and is required for protein transport from the endoplasmic reticulum (ER) to the Golgi complex. Alternatively spliced transcript variants encoding different isoforms have been found for this gene. [provided by RefSeq, Oct 2011]

Protein Families: Druggable Genome

Product images:



Coomassie blue staining of purified RAB2A protein (Cat# [TP300433]). The protein was produced from HEK293T cells transfected with RAB2A cDNA clone (Cat# [RC200433]) using MegaTran 2.0 (Cat# [TT210002]).