

Product datasheet for **TP300432M**

RAB6A (NM_002869) Human Recombinant Protein

Product data:

| | |
|---------------------------------------|--|
| Product Type: | Recombinant Proteins |
| Description: | Recombinant protein of human RAB6A, member RAS oncogene family (RAB6A), transcript variant 1, 100 µg |
| Species: | Human |
| Expression Host: | HEK293T |
| Expression cDNA Clone or AA Sequence: | >RC200432 protein sequence Red =Cloning site Green =Tags(s) |
| | <p>MSTGGDFGNPLRKFKLVFLGSEQSVGKTSLITRFMYDSFDNTYQATIGIDFLSKTMYLEDRTIRLQLWDTA GQERFRSLIPSYIRDSAAAVVYDITNVNSFQQTTKWIDDVTERGSDVIIIMLVGNKTDLADKRVQVSIIE GERKAKELNVMFIETSAKAGYNVKQLFRRVAAALPGMESTQDRSREDMIDIKLEKQPVEGGCSC</p> <p>TRTRPLEQKLISEEDLAANDILDYKDDDDKV</p> |
| Tag: | C-Myc/DDK |
| Predicted MW: | 23.4 kDa |
| Concentration: | >0.05 µg/µL as determined by microplate BCA method |
| Purity: | > 80% as determined by SDS-PAGE and Coomassie blue staining |
| Buffer: | 25 mM Tris-HCl, 100 mM glycine, pH 7.3, 10% glycerol |
| Preparation: | Recombinant protein was captured through anti-DDK affinity column followed by conventional chromatography steps. |
| Note: | For testing in cell culture applications, please filter before use. Note that you may experience some loss of protein during the filtration process. |
| Storage: | Store at -80°C. |
| Stability: | Stable for 12 months from the date of receipt of the product under proper storage and handling conditions. Avoid repeated freeze-thaw cycles. |
| RefSeq: | NP_002860 |
| Locus ID: | 5870 |
| UniProt ID: | P20340 , A0A024R5H8 |



[View online »](#)

RefSeq Size: 3419

Cytogenetics: 11q13.4

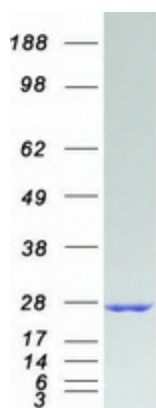
RefSeq ORF: 624

Synonyms: RAB6

Summary: This gene encodes a member of the RAB family, which belongs to the small GTPase superfamily. GTPases of the RAB family bind to various effectors to regulate the targeting and fusion of transport carriers to acceptor compartments. This protein is located at the Golgi apparatus, which regulates trafficking in both a retrograde (from early endosomes and Golgi to the endoplasmic reticulum) and an anterograde (from the Golgi to the plasma membrane) directions. Myosin II is an effector of this protein in these processes. This protein is also involved in assembly of human cytomegalovirus (HCMV) by interacting with the cellular protein Bicaudal D1, which interacts with the HCMV virion tegument protein, pp150. Multiple alternatively spliced transcript variants encoding different isoforms have been identified. [provided by RefSeq, Aug 2011]

Protein Families: Druggable Genome

Product images:



Coomassie blue staining of purified RAB6A protein (Cat# [TP300432]). The protein was produced from HEK293T cells transfected with RAB6A cDNA clone (Cat# [RC200432]) using MegaTran 2.0 (Cat# [TT210002]).