

## Product datasheet for **TP300431L**

### **RAB7L1 (RAB29) (NM\_003929) Human Recombinant Protein**

#### Product data:

Product Type:	Recombinant Proteins
Description:	Recombinant protein of human RAB7, member RAS oncogene family-like 1 (RAB7L1), transcript variant 1, 1 mg
Species:	Human
Expression Host:	HEK293T
Expression cDNA Clone or AA Sequence:	>RC200431 protein sequence <b>Red</b> =Cloning site <b>Green</b> =Tags(s)
	<p>MGSRDHLFKVLVVGDAAVGKTSLVQRYSDSFSKHYKSTVGVDFALKVLQWSDYEIVRLQLWDIAGQERF TSMTRLYYRDASACVIMFDVTNATTFNSQRWKQDLDSKLTLPNGEPVPCLLANKCDLSPWAVSRDQID RFSKENGFTGWTETSVKENKNINEAMRVLIEKMMRNSTEDIMSLSTQGDYINLQTKSSSWSCC</p> <p><b>TRTRPLEQKLISEEDLAANDILDYKDDDDKV</b></p>
Tag:	C-Myc/DDK
Predicted MW:	23 kDa
Concentration:	>0.05 µg/µL as determined by microplate BCA method
Purity:	> 80% as determined by SDS-PAGE and Coomassie blue staining
Buffer:	25 mM Tris-HCl, 100 mM glycine, pH 7.3, 10% glycerol
Preparation:	Recombinant protein was captured through anti-DDK affinity column followed by conventional chromatography steps.
Note:	For testing in cell culture applications, please filter before use. Note that you may experience some loss of protein during the filtration process.
Storage:	Store at -80°C.
Stability:	Stable for 12 months from the date of receipt of the product under proper storage and handling conditions. Avoid repeated freeze-thaw cycles.
RefSeq:	<u><a href="#">NP_003920</a></u>
Locus ID:	8934
UniProt ID:	<u><a href="#">O14966</a></u> , <u><a href="#">Q6FGU7</a></u>



[View online »](#)

RefSeq Size: 3324

Cytogenetics: 1q32.1

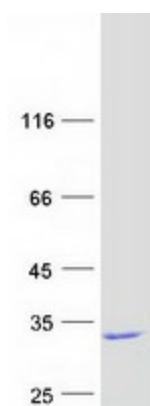
RefSeq ORF: 609

Synonyms: RAB7L; RAB7L1

**Summary:** Rab GTPase key regulator in vesicle trafficking. Essential for maintaining the integrity of the endosome-trans-Golgi network structure. Together with LRRK2, plays a role in the retrograde trafficking pathway for recycling proteins, such as mannose 6 phosphate receptor (M6PR), between lysosomes and the Golgi apparatus in a retromer-dependent manner. Regulates neuronal process morphology in the intact central nervous system (CNS). May play a role in the formation of typhoid toxin transport intermediates during *Salmonella enterica* serovar Typhi (*S.Typhi*) epithelial cell infection.[UniProtKB/Swiss-Prot Function]

**Protein Families:** Druggable Genome

### Product images:



Coomassie blue staining of purified RAB29 protein (Cat# [TP300431]). The protein was produced from HEK293T cells transfected with RAB29 cDNA clone (Cat# [RC200431]) using MegaTran 2.0 (Cat# [TT210002]).