

Product datasheet for **TP300427M**

RECQ1 (RECQL) (NM_032941) Human Recombinant Protein

Product data:

Product Type:	Recombinant Proteins
Description:	Recombinant protein of human RecQ protein-like (DNA helicase Q1-like) (RECQL), transcript variant 2, 100 µg
Species:	Human
Expression Host:	HEK293T
Expression cDNA Clone or AA Sequence:	>RC200427 protein sequence Red=Cloning site Green=Tags(s)

MASVSALTEELDSITSELHAVEIQELTERQQELIQKKKVLTKKIKQCLESDAGASNEYDSSPAAWNK
EDFPWSGKVKDILQNVFKLEKFRPLQLETINVTMAGKEVFLVMPTGGGKSLCYQLPALCSDGFTLVICPL
ISLMEDQLMVLKQLGISATMLNASSSKEHVKWWHAEMVKNSELKLIYVTPEDIAKSKMFMSRLEKAYEA
RRFTRIAVDEVHCCSQWGHDFRPDYKALGILKRQFPNASLIGLTATATNHVLTDAQKILCIEKCFTFTAS
FNRPNLYEVRQKPSNTEDFIEDIVKLINGRYKQGSGIICYFSQKDSEQVTVSLQNLGIHAGAYHANLEP
EDKTTVHRKWSANEIQVVVATVAFGMGIDKPDVRFVIHHSMSKSMENYYQESGRAGRDDMKADCILYYGF
GDIFRISSMVVMENVGQKLYEMVSYCQNISKRRVLMQAQHFDEWVNSEACNKMCDNCKKDSAFERKNIT
EYCRDLIKLKQAEELNEKLTPLKLIDSWMGKGAALRVAGVVAPTLPRELLEKIIAHFLIQYQYLKEDYS
FTAYATISYLKIGPKANLLNNEAHAITMQVTKSTQNSFRAESSQTCHSEQGDKKMEKKNSGNFQKKAANM
LQSGSKNTGAKKRKIDDA

TRTRPLEQKLISEEDLAANDILDYKDDDDKV

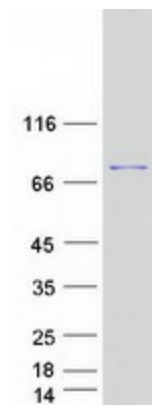
Tag:	C-Myc/DDK
Predicted MW:	73.3 kDa
Concentration:	>0.05 µg/µL as determined by microplate BCA method
Purity:	> 80% as determined by SDS-PAGE and Coomassie blue staining
Buffer:	25 mM Tris-HCl, 100 mM glycine, pH 7.3, 10% glycerol
Preparation:	Recombinant protein was captured through anti-DDK affinity column followed by conventional chromatography steps.
Note:	For testing in cell culture applications, please filter before use. Note that you may experience some loss of protein during the filtration process.
Storage:	Store at -80°C.



[View online »](#)

Stability:	Stable for 12 months from the date of receipt of the product under proper storage and handling conditions. Avoid repeated freeze-thaw cycles.
RefSeq:	NP_116559
Locus ID:	5965
UniProt ID:	P46063
RefSeq Size:	3598
Cytogenetics:	12p12.1
RefSeq ORF:	1947
Synonyms:	RecQ1; RECQL1
Summary:	The protein encoded by this gene is a member of the RecQ DNA helicase family. DNA helicases are enzymes involved in various types of DNA repair, including mismatch repair, nucleotide excision repair and direct repair. The encoded protein is involved in the processing of Holliday junctions, the suppression of sister chromatid exchanges, telomere maintenance, and is required for genotoxic stress resistance. Defects in this gene have been associated with several types of cancer. [provided by RefSeq, Jan 2017]

Product images:



Coomassie blue staining of purified RECQL protein (Cat# [TP300427]). The protein was produced from HEK293T cells transfected with RECQL cDNA clone (Cat# [RC200427]) using MegaTran 2.0 (Cat# [TT210002]).