

Product datasheet for **TP300423L**

RPL38 (NM_001035258) Human Recombinant Protein

Product data:

Product Type:	Recombinant Proteins
Description:	Recombinant protein of human ribosomal protein L38 (RPL38), transcript variant 2, 1 mg
Species:	Human
Expression Host:	HEK293T
Expression cDNA Clone or AA Sequence:	>RC200423 protein sequence Red =Cloning site Green =Tags(s)
	MPRKIEEIKDFLLTARRKDAKSVKIKKNKDNVFKVRCSTRYLYTLVITDKEKAELKQSLPPGLAVKELK TR TRPLEQKLISEEDLAANDILDYKDDDDKV
Tag:	C-Myc/DDK
Predicted MW:	8 kDa
Concentration:	>0.05 µg/µL as determined by microplate BCA method
Purity:	> 80% as determined by SDS-PAGE and Coomassie blue staining
Buffer:	25 mM Tris-HCl, 100 mM glycine, pH 7.3, 10% glycerol
Preparation:	Recombinant protein was captured through anti-DDK affinity column followed by conventional chromatography steps.
Note:	For testing in cell culture applications, please filter before use. Note that you may experience some loss of protein during the filtration process.
Storage:	Store at -80°C.
Stability:	Stable for 12 months from the date of receipt of the product under proper storage and handling conditions. Avoid repeated freeze-thaw cycles.
RefSeq:	NP_001030335
Locus ID:	6169
UniProt ID:	P63173 , A0A024R8P8
RefSeq Size:	376
Cytogenetics:	17q25.1



[View online »](#)

RefSeq ORF: 210

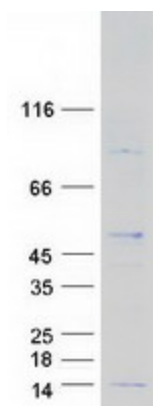
Synonyms: L38

Summary: Ribosomes, the organelles that catalyze protein synthesis, consist of a small 40S subunit and a large 60S subunit. Together these subunits are composed of 4 RNA species and approximately 80 structurally distinct proteins. This gene encodes a ribosomal protein that is a component of the 60S subunit. The protein belongs to the L38E family of ribosomal proteins. It is located in the cytoplasm. Alternative splice variants have been identified, both encoding the same protein. As is typical for genes encoding ribosomal proteins, there are multiple processed pseudogenes of this gene dispersed through the genome, including one located in the promoter region of the type 1 angiotensin II receptor gene. [provided by RefSeq, Jul 2008]

Protein Families: Druggable Genome

Protein Pathways: Ribosome

Product images:



Coomassie blue staining of purified RPL38 protein (Cat# [TP300423]). The protein was produced from HEK293T cells transfected with RPL38 cDNA clone (Cat# [RC200423]) using MegaTran 2.0 (Cat# [TT210002]).