

Product datasheet for **TP300421M**

SATB1 (NM_002971) Human Recombinant Protein

Product data:

Product Type: Recombinant Proteins

Description: Recombinant protein of human SATB homeobox 1 (SATB1), transcript variant 1, 100 µg

Species: Human

Expression Host: HEK293T

Expression cDNA >RC200421 protein sequence

Clone or AA **Red**=Cloning site **Green**=Tags(s)

Sequence:

MDHLNEATQGKEHSEMSNNVSDPKGPPAKIARLEQNGSPLGRGRLGSTGAKMQGVPLKHSGLMKTNLRK
GTMLPVFCVVEHYENAIEYDCKEEHAEFVLRKDMFLNQLIEMALLSLGYSHSSAAQAKGLIQVGKWNPV
PLSYVTDAPDATVADMLQDVYHVVTLKIQLHSCPKLEDLPPEQWSHTTVRNALKDLLKDMNQSSLAKECP
LSQSMISSIVNSTYYANVSAKQCQEFGRWYKHFKTKDMMVEMDLSSELSQQGANHVNFGQQPVPNGTAE
QPPSPAQLSHGSQPSVRTPLPNLHPGLVSTPISPQLVNQQQLVMAQLLNQQYAVNRLLAQQLSLNQQYLNHP
PPVSRSMNKPLEQQVSTNTEVSSEIYQWVRDELKCRAGISQAVFARVAFNRQTGLLSEILRKEEDPKTASQ
SLLVNLRAMQNFLQLPEAERDRIYQDERERSLNAASAMGPAPLISTPPSRPPQVKTATIATERNKGPENN
TMNINASIYDEIQQEMKRAKVSQALFAKVAATKSQGWLCCELLRWKEDPSPENRTLWENLSMIRRFSLPQ
PERDAIYEQESNAVHHHGDRPPPHIIVPAEQIQQQQQQQQQQQQQQQQAPPPPPQPPQPQTGPRLPQRPT
VASPAESDEENRQKTRPRTKISVEALGILQSFQDVGLYPDEEAIQTLAQLDLPKYTIKFFQNQRYYL
KHHGKLDNSGLEVDVAEYKEEELLKDLEESVQDKNTNTLFSVKLEEELSVEGNTDINTDLKD

TRTRPLEQKLISEEDLAANDILDYKDDDDKV

Tag: C-Myc/DDK

Predicted MW: 85.8 kDa

Concentration: >0.05 µg/µL as determined by microplate BCA method

Purity: > 80% as determined by SDS-PAGE and Coomassie blue staining

Buffer: 25 mM Tris-HCl, 100 mM glycine, pH 7.3, 10% glycerol

Preparation: Recombinant protein was captured through anti-DDK affinity column followed by conventional chromatography steps.

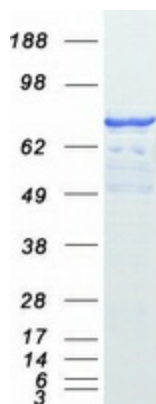
Note: For testing in cell culture applications, please filter before use. Note that you may experience some loss of protein during the filtration process.

Storage: Store at -80°C.



[View online »](#)

Stability:	Stable for 12 months from the date of receipt of the product under proper storage and handling conditions. Avoid repeated freeze-thaw cycles.
RefSeq:	NP_002962
Locus ID:	6304
UniProt ID:	Q01826 , A0A024R2H1
RefSeq Size:	5556
Cytogenetics:	3p24.3
RefSeq ORF:	2289
Synonyms:	DEFDA; KTZSL
Summary:	This gene encodes a matrix protein which binds nuclear matrix and scaffold-associating DNAs through a unique nuclear architecture. The protein recruits chromatin-remodeling factors in order to regulate chromatin structure and gene expression. [provided by RefSeq, Apr 2016]
Protein Families:	Druggable Genome, Transcription Factors

Product images:

Coomassie blue staining of purified SATB1 protein (Cat# [TP300421]). The protein was produced from HEK293T cells transfected with SATB1 cDNA clone (Cat# [RC200421]) using MegaTran 2.0 (Cat# [TT210002]).