

Product datasheet for **TP300418L**

Glucose Transporter 5 GLUT5 (SLC2A5) (NM_003039) Human Recombinant Protein

Product data:

Product Type:	Recombinant Proteins
Description:	Recombinant protein of human solute carrier family 2 (facilitated glucose/fructose transporter), member 5 (SLC2A5), transcript variant 1, 1 mg
Species:	Human
Expression Host:	HEK293T
Expression cDNA Clone or AA Sequence:	>RC200418 protein sequence Red =Cloning site Green =Tags(s)

MEQQDQSMKEGRLTLVLALATLIAAFGSSFQYGYNVAAVNSPALLMQQFYNETYYGRTGEFMEDFPLTLL
WSVTVSMFPFGGFIGSLLVGPLVKNKFGKRGALLFNNIFSIVPAILMGCSRATSFEIIISRLLVGICAG
VSSNVPMYLGELAPKNLRGALGVVPQLFITVGLVAQIFGLRNLLANVDGWPIILLGLTGVPAAQLLLL
PFFPESPRYLLIQKKDEAAAKKALQTLRGWDSVDREVAEIRQEDEAEKAAGFISVLKLFMRSLRWQLLS
IIVLMGGQQLSGVNAIYYYADQIYLSAGVPEEHVQYVYTAGTGAVNVVMTFCAVFVVELLGRLLLLLGF
ICLIACCVLTAALALQDTVSWMPYISIVCVISYVIGHALGPSPIPALLITEIFLQSSRPSAFMVGGSVHW
LSNFTVGLIFPFIQEGLPYSFIVFAVICLLTTIYIFLIVPETKAKTFIEINQIFTKMNK/SEVYPEKEE
LKELPPVTSEQ

TRTRPLEQKLISEEDLAANDILDYKDDDDKV

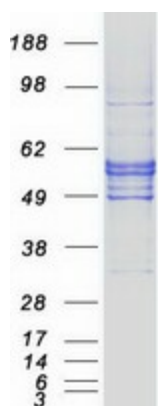
Tag:	C-Myc/DDK
Predicted MW:	54.8 kDa
Concentration:	>0.05 µg/µL as determined by microplate BCA method
Purity:	> 80% as determined by SDS-PAGE and Coomassie blue staining
Buffer:	25 mM Tris-HCl, 100 mM glycine, pH 7.3, 10% glycerol
Preparation:	Recombinant protein was captured through anti-DDK affinity column followed by conventional chromatography steps.
Note:	For testing in cell culture applications, please filter before use. Note that you may experience some loss of protein during the filtration process.
Storage:	Store at -80°C.



[View online »](#)

Stability:	Stable for 12 months from the date of receipt of the product under proper storage and handling conditions. Avoid repeated freeze-thaw cycles.
RefSeq:	NP_003030
Locus ID:	6518
UniProt ID:	P22732
RefSeq Size:	2454
Cytogenetics:	1p36.23
RefSeq ORF:	1503
Synonyms:	GLUT-5; GLUT5
Summary:	The protein encoded by this gene is a fructose transporter responsible for fructose uptake by the small intestine. The encoded protein also is necessary for the increase in blood pressure due to high dietary fructose consumption. [provided by RefSeq, Jun 2016]
Protein Families:	Transmembrane

Product images:



Coomassie blue staining of purified SLC2A5 protein (Cat# [TP300418]). The protein was produced from HEK293T cells transfected with SLC2A5 cDNA clone (Cat# [RC200418]) using MegaTran 2.0 (Cat# [TT210002]).