

Product datasheet for TP300411L

TGFBI (NM_000358) Human Recombinant Protein

Product data:

Product Type:	Recombinant Proteins
Description:	Recombinant protein of human transforming growth factor, beta-induced, 68kDa (TGFBI), 1 mg
Species:	Human
Expression Host:	HEK293T
Expression cDNA Clone or AA Sequence:	>RC200411 protein sequence Red=Cloning site Green=Tags(s)

MALFVRLALALALALGPAATLAGPAKSPYQLVLQHSRLRGRQHGPNVCAVQKVIGTNRKYFTNCKQWYQ
RKICGKSTVISYECCPGYEKVPGEKGCPAALPLSNLYETLGVVGSTTTQLYDRTEKLRPEMEGPGSFTI
FAPSNEAWASLPAEVLDSLVSNNIELLNALRYHMVGRRVLTDELKHGMLTSMYQNSNIQIHHYPNGIV
TVNCARLLKADHATNGVWHLIDKIVSTITNNIQQIIEIDTFETLRAAVAASGLNMTLEGNGQYTLAP
TNEAFEKIPSETLNRILGDPEALRDLLNNHILKSAMCAEIVAGLSVETLEGTTLEVGCSDMLTINGKA
IISNKDILATNGVIHYIDELLIPDSAKTLFELAAESDVSTAIDLFRQAGLGNHLSGSERLTLAPLNSVF
KDGTPPIDAHRNLLRNHIIKDQLASKYLYHGQTLETGGKLRVFFVYRNSLCIENSCIAAHDKRGYGT
LFTMDRVLTPPMGTVMDVLKGDNRFSMLVAAIQSAGLTETLNREGVYTVFAPTNEAFRALPPRERSLLG
DAKELANILKYHIGDEILVSGGIGALVRLKSLQGDKLEVSLKNNVSVNKEPVAEPDIMATNGVHVITN
VLQPPANRPQERGDELADSALEIFKQASAFSRASQRSVRLAPVYQKLLERMKH

TRTRPLEQKLISEEDLAANDILDYKDDDDKV

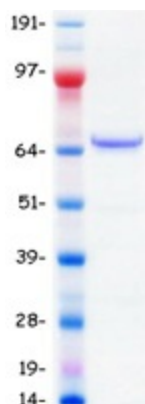
Tag:	C-Myc/DDK
Predicted MW:	72.4 kDa
Concentration:	>0.05 µg/µL as determined by microplate BCA method
Purity:	> 80% as determined by SDS-PAGE and Coomassie blue staining
Buffer:	25 mM Tris-HCl, 100 mM glycine, pH 7.3, 10% glycerol
Preparation:	Recombinant protein was captured through anti-DDK affinity column followed by conventional chromatography steps.
Note:	For testing in cell culture applications, please filter before use. Note that you may experience some loss of protein during the filtration process.
Storage:	Store at -80°C.



[View online »](#)

Stability:	Stable for 12 months from the date of receipt of the product under proper storage and handling conditions. Avoid repeated freeze-thaw cycles.
RefSeq:	<u>NP_000349</u>
Locus ID:	7045
UniProt ID:	<u>Q15582, A0A0S2Z4Q2</u>
RefSeq Size:	2805
Cytogenetics:	5q31.1
RefSeq ORF:	2049
Synonyms:	BIGH3; CDB1; CDG2; CDGG1; CSD; CSD1; CSD2; CSD3; EBMD; LCD1
Summary:	This gene encodes an RGD-containing protein that binds to type I, II and IV collagens. The RGD motif is found in many extracellular matrix proteins modulating cell adhesion and serves as a ligand recognition sequence for several integrins. This protein plays a role in cell-collagen interactions and may be involved in endochondrial bone formation in cartilage. The protein is induced by transforming growth factor-beta and acts to inhibit cell adhesion. Mutations in this gene are associated with multiple types of corneal dystrophy. [provided by RefSeq, Jul 2008]
Protein Families:	Druggable Genome, Secreted Protein, Transmembrane

Product images:



Coomassie blue staining of purified TGFBI protein (Cat# [TP300411]). The protein was produced from HEK293T cells transfected with TGFBI cDNA clone (Cat# [RC200411]) using MegaTran 2.0 (Cat# [TT210002]).