

## Product datasheet for **TP300409L**

### EIPR1 (NM\_003310) Human Recombinant Protein

#### Product data:

Product Type:	Recombinant Proteins
Description:	Recombinant protein of human tumor suppressing subtransferable candidate 1 (TSSC1), 1 mg
Species:	Human
Expression Host:	HEK293T
Expression cDNA	>RC200409 protein sequence
Clone or AA Sequence:	Red=Cloning site Green=Tags(s)

MEDDAPVIYGLEFQARALTPQTAETDAIRFLVGTQSLKYDNQIHIIDFDDENNIINKNVLLHQAGEIWHI  
SASPADRGVLTTCYNRTSDSKVLTCAAWRMPKELESGSHESPDDSSSTAQTLELLCHLDNTAHGNMACV  
VWPEMGDGKKIISLADNHILLWDLQESSQAVLASSASLEGKGQLKFTSGRWSPHHNCTQVATANDTTLR  
GWDTRSMSQIYCIENAHGQLVRDLDFNPNKQYYLASCDDCKVKFWDTRNVTEPVKTL EEHSHWVWNVRY  
NHSHDQLVLTGSSDSRVILSNMVSISSEPFGLVDDDDISDQEDHRSEEKSKEPLQDNVIATYEEHEDSV  
YAVDWSSADPWLFASLSYDGRLVINRVPRALKYHILL

TRTRPLEQKLISEEDLAANDILDYKDDDDKV

Tag:	C-Myc/DDK
Predicted MW:	43.4 kDa
Concentration:	>0.05 µg/µL as determined by microplate BCA method
Purity:	> 80% as determined by SDS-PAGE and Coomassie blue staining
Buffer:	25 mM Tris-HCl, 100 mM glycine, pH 7.3, 10% glycerol
Preparation:	Recombinant protein was captured through anti-DDK affinity column followed by conventional chromatography steps.
Note:	For testing in cell culture applications, please filter before use. Note that you may experience some loss of protein during the filtration process.
Storage:	Store at -80°C.
Stability:	Stable for 12 months from the date of receipt of the product under proper storage and handling conditions. Avoid repeated freeze-thaw cycles.
RefSeq:	<a href="#">NP_003301</a>
Locus ID:	7260



[View online »](#)

UniProt ID: [Q53HC9](#)

RefSeq Size: 1732

Cytogenetics: 2p25.3

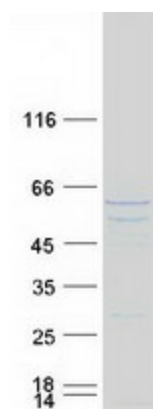
RefSeq ORF: 1161

Synonyms: EIPR-1; TSSC1

**Summary:** This gene has been reported in PMID 9403053 as one of several tumor-suppressing subtransferable fragments located in the imprinted gene domain of 11p15.5, an important tumor-suppressor gene region. Alterations in this region have been associated with the Beckwith-Wiedemann syndrome, Wilms tumor, rhabdomyosarcoma, adrenocortical carcinoma, and lung, ovarian, and breast cancer. Alignment of this gene to genomic sequence data suggests that this gene resides on chromosome 2 rather than chromosome 11. [provided by RefSeq, Dec 2008]

**Protein Families:** Druggable Genome

### Product images:



Coomassie blue staining of purified EIPR1 protein (Cat# [TP300409]). The protein was produced from HEK293T cells transfected with EIPR1 cDNA clone (Cat# [RC200409]) using MegaTran 2.0 (Cat# [TT210002]).