

## Product datasheet for **TP300408L**

### gamma Tubulin (TUBG1) (NM\_001070) Human Recombinant Protein

#### Product data:

**Product Type:** Recombinant Proteins

**Description:** Recombinant protein of human tubulin, gamma 1 (TUBG1), 1 mg

**Species:** Human

**Expression Host:** HEK293T

**Expression cDNA Clone or AA Sequence:** >RC200408 protein sequence  
Red=Cloning site Green=Tags(s)

MPREIITLQLGQCGNQIGFEFWKQLCAEHGISPEGIVEEFATEGTDRKDVFFYQADDEHYIPRAVLLDLE  
PRVIHSILNSPYAKLYNPENIYLSEHGGGAGNNWASGFSQGEKIHEDIFDIIDREADGSDSLEGFVLCHS  
IAGGTGSGGLGSYLLERLNDRYPKKLVQTYSVFPNQDEMSDVVWQPYNSLLTKRLTQNADCVVLDNTAL  
NRIATDRLHIQNPSFSQINQLVSTIMSASTTTLRYPGYMNNDLIGLIASLIPTPRLHFLMTGYTPLTTDQ  
SVASVRKTTVLDMRRLQPKNVMVSTGRDRQTNHCYIAILNIIQGEVDPTQVHKSLQRIRERKLANFIP  
WGPASIQVALSRKSPYLP SAHRVSGLMANHTSISL FERTCRQYDKLRKREAFLEQFRKEDMFKDNFDE  
MDSREIVQQLIDEYHAATRPDYISWGTQEQ

TRTRPLEQKLISEEDLAANDILDYKDDDDKV

**Tag:** C-Myc/DDK

**Predicted MW:** 51 kDa

**Concentration:** >0.05 µg/µL as determined by microplate BCA method

**Purity:** > 80% as determined by SDS-PAGE and Coomassie blue staining

**Buffer:** 25 mM Tris-HCl, 100 mM glycine, pH 7.3, 10% glycerol

**Preparation:** Recombinant protein was captured through anti-DDK affinity column followed by conventional chromatography steps.

**Note:** For testing in cell culture applications, please filter before use. Note that you may experience some loss of protein during the filtration process.

**Storage:** Store at -80°C.

**Stability:** Stable for 12 months from the date of receipt of the product under proper storage and handling conditions. Avoid repeated freeze-thaw cycles.

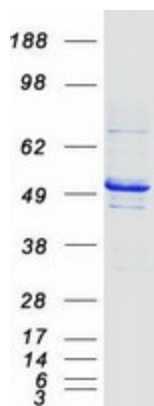
**RefSeq:** [NP\\_001061](#)



[View online »](#)

Locus ID:	7283
UniProt ID:	<a href="#">P23258</a>
RefSeq Size:	1968
Cytogenetics:	17q21.2
RefSeq ORF:	1353
Synonyms:	CDCBM4; GCP-1; TUBG; TUBGCP1
Summary:	This gene encodes a member of the tubulin superfamily. The encoded protein localizes to the centrosome where it binds to microtubules as part of a complex referred to as the gamma-tubulin ring complex. The protein mediates microtubule nucleation and is required for microtubule formation and progression of the cell cycle. A pseudogene of this gene is found on chromosome 7. [provided by RefSeq, Jan 2009]
Protein Families:	Druggable Genome

### Product images:



Coomassie blue staining of purified TUBG1 protein (Cat# [TP300408]). The protein was produced from HEK293T cells transfected with TUBG1 cDNA clone (Cat# [RC200408]) using MegaTran 2.0 (Cat# [TT210002]).