

Product datasheet for **TP300408**

gamma Tubulin (TUBG1) (NM_001070) Human Recombinant Protein

Product data:

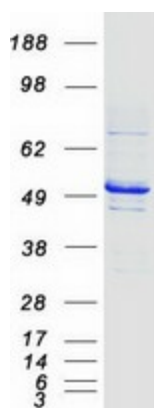
Product Type:	Recombinant Proteins
Description:	Recombinant protein of human tubulin, gamma 1 (TUBG1), 20 µg
Species:	Human
Expression Host:	HEK293T
Expression cDNA Clone or AA Sequence:	>RC200408 protein sequence Red =Cloning site Green =Tags(s)
	<p>MPREIITLQLGQCGNQIGFEFWKQLCAEHGISPEGIVEEFATEGTDRKDVFFYQADDEHYIPRAVLLDLE PRVIHSILNSPYAKLYNPENIYLSEHGGAGNNWASGFSQGEKIHEDIFDIIDREADGSDSLEGFVLCBS IAGGTGSLGSLYLLERLNDRYPKKLVQTYSVFPNQDEMDSVWVQPYNSLLTLKRLTQNADCVVLDNTAL NRIATDRLHIQNPSFSQINQLVSTIMSASTTLRYPGYMNDLIGLIASLIPTPRLHFLMTGYTPLTTDQ SVASVRKTTVLDVMRRLQLPKNVMVSTGRDRQTNHCYIAILNIIQGEVDPTQVHKSLQRIRERKLANFIP WGPASIQVALSRKSPYLP SAHRVSGLMANHTSISL FERTCRQYDKLRKREAFLEQFRKEDMFKDNFDE MDSREIVQQLIDEYHAATRPDYISWGTQEQ</p> <p>TRTRPLEQKLISEEDLAANDILDYKDDDDKV</p>
Tag:	C-Myc/DDK
Predicted MW:	51 kDa
Concentration:	>0.05 µg/µL as determined by microplate BCA method
Purity:	> 80% as determined by SDS-PAGE and Coomassie blue staining
Buffer:	25 mM Tris-HCl, 100 mM glycine, pH 7.3, 10% glycerol
Preparation:	Recombinant protein was captured through anti-DDK affinity column followed by conventional chromatography steps.
Note:	For testing in cell culture applications, please filter before use. Note that you may experience some loss of protein during the filtration process.
Storage:	Store at -80°C.
Stability:	Stable for 12 months from the date of receipt of the product under proper storage and handling conditions. Avoid repeated freeze-thaw cycles.
RefSeq:	<u>NP_001061</u>



[View online »](#)

Locus ID:	7283
UniProt ID:	P23258
RefSeq Size:	1968
Cytogenetics:	17q21.2
RefSeq ORF:	1353
Synonyms:	CDCBM4; GCP-1; TUBG; TUBGCP1
Summary:	This gene encodes a member of the tubulin superfamily. The encoded protein localizes to the centrosome where it binds to microtubules as part of a complex referred to as the gamma-tubulin ring complex. The protein mediates microtubule nucleation and is required for microtubule formation and progression of the cell cycle. A pseudogene of this gene is found on chromosome 7. [provided by RefSeq, Jan 2009]
Protein Families:	Druggable Genome

Product images:



Coomassie blue staining of purified TUBG1 protein (Cat# TP300408). The protein was produced from HEK293T cells transfected with TUBG1 cDNA clone (Cat# [RC200408]) using MegaTran 2.0 (Cat# [TT210002]).