

## Product datasheet for TP300407L

### UBE2G2 (NM\_003343) Human Recombinant Protein

#### Product data:

Product Type:	Recombinant Proteins
Description:	Recombinant protein of human ubiquitin-conjugating enzyme E2G 2 (UBC7 homolog, yeast) (UBE2G2), transcript variant 1, 1 mg
Species:	Human
Expression Host:	HEK293T
Expression cDNA Clone or AA Sequence:	>RC200407 protein sequence <b>Red</b> =Cloning site <b>Green</b> =Tags(s)
	<p>MAGTALKRLMAEYKQLTLNPPGIVAGPMNEENFFEWREALIMGPEDTCFEFGVFPAILSFPDYLSPPK MRFTCEMFHPNIYPDGRVCISILHAPGDDPMGYESSAERWSPVQSVEKILLSVVSMLAEPNDESGANVDA SKMWRDDREQFYKIAKQIVQKSLGL</p> <p><b>TRTRPLEQKLISEEDLAANDILDYKDDDDKV</b></p>
Tag:	C-Myc/DDK
Predicted MW:	18.4 kDa
Concentration:	>0.05 µg/µL as determined by microplate BCA method
Purity:	> 80% as determined by SDS-PAGE and Coomassie blue staining
Buffer:	25 mM Tris-HCl, 100 mM glycine, pH 7.3, 10% glycerol
Preparation:	Recombinant protein was captured through anti-DDK affinity column followed by conventional chromatography steps.
Note:	For testing in cell culture applications, please filter before use. Note that you may experience some loss of protein during the filtration process.
Storage:	Store at -80°C.
Stability:	Stable for 12 months from the date of receipt of the product under proper storage and handling conditions. Avoid repeated freeze-thaw cycles.
RefSeq:	<a href="#">NP_003334</a>
Locus ID:	7327
UniProt ID:	<a href="#">P60604</a>



[View online »](#)

RefSeq Size: 3400

Cytogenetics: 21q22.3

RefSeq ORF: 495

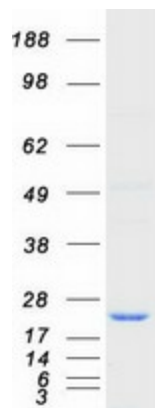
Synonyms: UBC7

**Summary:** The modification of proteins with ubiquitin is an important cellular mechanism for targeting abnormal or short-lived proteins for degradation. Ubiquitination involves at least three classes of enzymes: ubiquitin-activating enzymes, or E1s, ubiquitin-conjugating enzymes, or E2s, and ubiquitin-protein ligases, or E3s. This gene encodes a member of the E2 ubiquitin-conjugating enzyme family. The encoded protein shares 100% sequence identity with the mouse counterpart. This gene is ubiquitously expressed, with high expression seen in adult muscle. Three alternatively spliced transcript variants encoding distinct isoforms have been found for this gene. [provided by RefSeq, Jan 2011]

**Protein Families:** Druggable Genome

**Protein Pathways:** Parkinson's disease, Ubiquitin mediated proteolysis

### Product images:



Coomassie blue staining of purified UBE2G2 protein (Cat# [TP300407]). The protein was produced from HEK293T cells transfected with UBE2G2 cDNA clone (Cat# [RC200407]) using MegaTran 2.0 (Cat# [TT210002]).