

Product datasheet for **TP300405M**

VAMP8 (NM_003761) Human Recombinant Protein

Product data:

Product Type:	Recombinant Proteins
Description:	Recombinant protein of human vesicle-associated membrane protein 8 (endobrevin) (VAMP8), 100 µg
Species:	Human
Expression Host:	HEK293T
Expression cDNA Clone or AA Sequence:	>RC200405 protein sequence Red =Cloning site Green =Tags(s)
	MEEASEGGGNDVRNRLQSEVEGVKNIMTQNVERILARGENLEHLRNKTEDLEATSEHFKTTSQKVARKFW WKNVKMIVLICVIVFIILFIVLFATGAFS
	TR TRPLEQKLISEEDLAANDILDYKDDDDKV
Tag:	C-Myc/DDK
Predicted MW:	11.3 kDa
Concentration:	>0.05 µg/µL as determined by microplate BCA method
Purity:	> 80% as determined by SDS-PAGE and Coomassie blue staining
Buffer:	25 mM Tris-HCl, 100 mM glycine, pH 7.3, 10% glycerol
Preparation:	Recombinant protein was captured through anti-DDK affinity column followed by conventional chromatography steps.
Note:	For testing in cell culture applications, please filter before use. Note that you may experience some loss of protein during the filtration process.
Storage:	Store at -80°C.
Stability:	Stable for 12 months from the date of receipt of the product under proper storage and handling conditions. Avoid repeated freeze-thaw cycles.
RefSeq:	NP_003752
Locus ID:	8673
UniProt ID:	Q9BV40
RefSeq Size:	790



[View online »](#)

Cytogenetics: 2p11.2

RefSeq ORF: 300

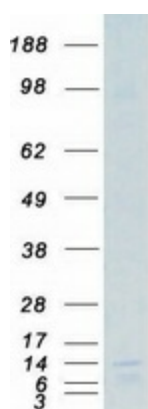
Synonyms: EDB; VAMP-8

Summary: This gene encodes an integral membrane protein that belongs to the synaptobrevin/vesicle-associated membrane protein subfamily of soluble N-ethylmaleimide-sensitive factor attachment protein receptors (SNAREs). The encoded protein is involved in the fusion of synaptic vesicles with the presynaptic membrane.[provided by RefSeq, Jun 2010]

Protein Families: Stem cell - Pluripotency, Transmembrane

Protein Pathways: SNARE interactions in vesicular transport

Product images:



Coomassie blue staining of purified VAMP8 protein (Cat# [TP300405]). The protein was produced from HEK293T cells transfected with VAMP8 cDNA clone (Cat# [RC200405]) using MegaTran 2.0 (Cat# [TT210002]).