

Product datasheet for **TP300404M**

Ezrin (EZR) (NM_003379) Human Recombinant Protein

Product data:

Product Type:	Recombinant Proteins
Description:	Recombinant protein of human ezrin (EZR), transcript variant 1, 100 µg
Species:	Human
Expression Host:	HEK293T
Expression cDNA Clone or AA Sequence:	>RC200404 protein sequence Red =Cloning site Green =Tags(s)

MPKPINVRVTTMDAELEFAIQPNTTGGKQLFDQVKTIGLREVWYFGLHYVDNKGFPWTWLKLDKKVSAQEV
RKENPLQFKFRAKFYPEDVAEELIQDITQKLFFLQVKEGILSDEIYCPPETAVLLGSYAVQAKFGDYNKE
VHKSGYLSSERLIPQRVMDQHKLTRDQWEDRIQVWHAEHRGMLKDNAMLEYLKIAQDLEMYGINYFEIK
N
KKGTDLWLGVDALGLNIYEKDDKLTPIKIGFPWSEIRNISFNDKKFVIKPIDKKAPDFVYAPRLRINKRI
LQLCMGNHELYMRRRKPDITIEVQQMKAQAREEKHQKQLERQQLETEKKRRETVEREKEQMMREKEELM
LR
LQDYEEKTKKAERELSEQIQRALQLEEERKRAQEEAERLEADRMAALRAKEELERQAVDQIKSQEQLAAE
LAEYAKIALLEEARRRKEDEVEEWQHRAKEAQDDLVTKEELHLVMTAPPPPPVYEPVSYHVQESLQ
DEGAEPTGYSALSSEGIRDDRNEEKRITEAEKNERVQRQLLTLSELSQARDENKRTHNDIIHNENMRQ
GRDKYKTLRQIRQGNTKQRIDEFEAL

TRTRPLEQKLISEEDLAANDILDYKDDDDKV

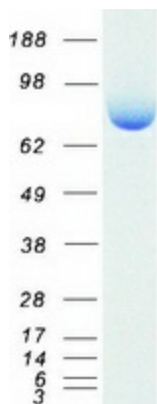
Tag:	C-Myc/DDK
Predicted MW:	69.2 kDa
Concentration:	>0.05 µg/µL as determined by microplate BCA method
Purity:	> 80% as determined by SDS-PAGE and Coomassie blue staining
Buffer:	25 mM Tris-HCl, 100 mM glycine, pH 7.3, 10% glycerol
Bioactivity:	ELISA capture for autoantibodies (PMID: 27146838)
Preparation:	Recombinant protein was captured through anti-DDK affinity column followed by conventional chromatography steps.
Note:	For testing in cell culture applications, please filter before use. Note that you may experience some loss of protein during the filtration process.



[View online »](#)

Storage:	Store at -80°C.
Stability:	Stable for 12 months from the date of receipt of the product under proper storage and handling conditions. Avoid repeated freeze-thaw cycles.
RefSeq:	NP_003370
Locus ID:	7430
UniProt ID:	P15311
RefSeq Size:	3172
Cytogenetics:	6q25.3
RefSeq ORF:	1758
Synonyms:	CVIL; CVL; HEL-S-105; VIL2
Summary:	The cytoplasmic peripheral membrane protein encoded by this gene functions as a protein-tyrosine kinase substrate in microvilli. As a member of the ERM protein family, this protein serves as an intermediate between the plasma membrane and the actin cytoskeleton. This protein plays a key role in cell surface structure adhesion, migration and organization, and it has been implicated in various human cancers. A pseudogene located on chromosome 3 has been identified for this gene. Alternatively spliced variants have also been described for this gene. [provided by RefSeq, Jul 2008]
Protein Families:	Druggable Genome
Protein Pathways:	Leukocyte transendothelial migration, Pathogenic Escherichia coli infection, Regulation of actin cytoskeleton

Product images:



Coomassie blue staining of purified EZR protein (Cat# [TP300404]). The protein was produced from HEK293T cells transfected with EZR cDNA clone (Cat# [RC200404]) using MegaTran 2.0 (Cat# [TT210002]).