

Product datasheet for **TP300404L**

Ezrin (EZR) (NM_003379) Human Recombinant Protein

Product data:

Product Type:	Recombinant Proteins
Description:	Recombinant protein of human ezrin (EZR), transcript variant 1, 1 mg
Species:	Human
Expression Host:	HEK293T
Expression cDNA	>RC200404 protein sequence
Clone or AA Sequence:	Red=Cloning site Green=Tags(s)

MPKPINVRVTTMDAELEFAIQPNTTGKQLFDQVKTIGLREVWYFGLHYVDNKGFPWLKLDKKVSAQEV
RKENPLQFKFRAKFYPEDVAEELIQDITQKLFFLQVKEGILSDEIYCPPETAVLLGSYAVQAKFGDYNKE
VHKSGYLSSERLIPQRVMDQHKLTRDQWEDRIQVWHAEHGMLKDNAMLEYLKIAQDLEMYGINIFYEIKN
KKGTDLWLGVDALGLNIYEKDDKLTDPKIGFPWSEIRNISFNDKKFVIKPIDKKAPDFVYAPRLRINKRI
LQLCMGNHELYMRRRKPDTIEVQQMKAQAREEKHQKQLERQQLETEKKRRETVEREKEQMMREKEELMLR
LQDYEEKTKKAERELSEIQRALQLEERKRAQEEAERLEADRMAALRAKEELERQAVDQIKSQEQLAAE
LAEYAKIALLEEARRRKEDEVEEWQHRAKEAQDDLVTKEELHLVMTAPPPPPVYEPVSYHVQESLQ
DEGAETGYSALSSEGIRDDRNEEKRITEAEKNERVQRQLLTSSELSQARDENKRTHNDIIHNENMRQ
GRDKYKTLRQIRQGNTKQRIDEFEAL

TRTRPLEQKLISEEDLAANDILDYKDDDDKV

Tag:	C-Myc/DDK
Predicted MW:	69.2 kDa
Concentration:	>0.05 µg/µL as determined by microplate BCA method
Purity:	> 80% as determined by SDS-PAGE and Coomassie blue staining
Buffer:	25 mM Tris-HCl, 100 mM glycine, pH 7.3, 10% glycerol
Bioactivity:	ELISA capture for autoantibodies (PMID: 27146838)
Preparation:	Recombinant protein was captured through anti-DDK affinity column followed by conventional chromatography steps.
Note:	For testing in cell culture applications, please filter before use. Note that you may experience some loss of protein during the filtration process.
Storage:	Store at -80°C.



[View online »](#)

Stability: Stable for 12 months from the date of receipt of the product under proper storage and handling conditions. Avoid repeated freeze-thaw cycles.

RefSeq: [NP_003370](#)

Locus ID: 7430

UniProt ID: [P15311](#)

RefSeq Size: 3172

Cytogenetics: 6q25.3

RefSeq ORF: 1758

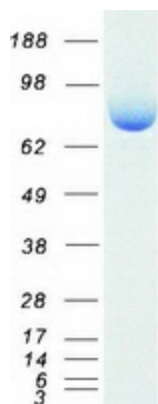
Synonyms: CVIL; CVL; HEL-S-105; VIL2

Summary: The cytoplasmic peripheral membrane protein encoded by this gene functions as a protein-tyrosine kinase substrate in microvilli. As a member of the ERM protein family, this protein serves as an intermediate between the plasma membrane and the actin cytoskeleton. This protein plays a key role in cell surface structure adhesion, migration and organization, and it has been implicated in various human cancers. A pseudogene located on chromosome 3 has been identified for this gene. Alternatively spliced variants have also been described for this gene. [provided by RefSeq, Jul 2008]

Protein Families: Druggable Genome

Protein Pathways: Leukocyte transendothelial migration, Pathogenic Escherichia coli infection, Regulation of actin cytoskeleton

Product images:



Coomassie blue staining of purified EZR protein (Cat# [TP300404]). The protein was produced from HEK293T cells transfected with EZR cDNA clone (Cat# [RC200404]) using MegaTran 2.0 (Cat# [TT210002]).