

## Product datasheet for **TP300404**

### Ezrin (EZR) (NM\_003379) Human Recombinant Protein

#### Product data:

Product Type:	Recombinant Proteins
Description:	Recombinant protein of human ezrin (EZR), transcript variant 1
Species:	Human
Expression Host:	HEK293T
Expression cDNA	>RC200404 protein sequence
Clone or AA Sequence:	Red=Cloning site Green=Tags(s)

MPKPINVRVTTMDAELEFAIQPNTTGGKQLFDQVKTIGLREVWYFGLHYVDNKGFPWLKLDKKVSAQEV  
RKENPLQFKFRAKFPEDVAEELIQDITQKLFFLQVKEGILSDEIYCPPETAVLLGSYAVQAKFGDYNKE  
VHKSGYLSSERLIPQRVMDQHKLTRDQWEDRIQVWHAHRGMLKDNAMLEYLKIAQDLEMYGINIFYEIKN  
KKGTDLWLGVDALGLNIYEKDDKLTTPKIGFPWSEIRNISFNDKKFVIKPIDKKAPDFVYAPRLRINKRI  
LQLCMGNHELYMRRRKPDTIEVQQMKAQAREEKHQKQLERQQLETEKKRRETVEREKEQMMREKEELMLR  
LQDYEEKTKKAERELSEIQRALQLEERKRAQEEAERLEADRMAALRAKEELERQAVDQIKSQEQLAAE  
LAEYAKIALLEEARRRKEDEVEEWQHRAKEAQDDLVTKEELHLVMTAPPPPPVYEPVSYHVQESLQ  
DEGAETGYSALSSEGIRDDRNEEKRITEAEKNERVQRQLLTSSELSQARDENKRTHNDIIHNENMRQ  
GRDKYKTLRQIRQGNTKQRIDEFEAL

TRTRPLEQKLISEEDLAANDILDYKDDDDKV

Tag:	C-Myc/DDK
Predicted MW:	69.2 kDa
Concentration:	>50 ug/mL as determined by microplate BCA method
Purity:	> 80% as determined by SDS-PAGE and Coomassie blue staining
Buffer:	25 mM Tris.HCl, pH 7.3, 100 mM glycine, 10% glycerol
Bioactivity:	ELISA capture for autoantibodies (PMID: <a href="#">27146838</a> )
Preparation:	Recombinant protein was captured through anti-DDK affinity column followed by conventional chromatography steps.
Applications:	Cell culture: For culture applications, please filter before use. Note that you may experience some loss of protein during the filtration process.
Storage:	Store at -80°C.



[View online »](#)

**Stability:** Stable for 12 months from the date of receipt of the product under proper storage and handling conditions. Avoid repeated freeze-thaw cycles.

**RefSeq:** [NP\\_003370](#)

**Locus ID:** 7430

**UniProt ID:** [P15311](#)

**RefSeq Size:** 3172

**Cytogenetics:** 6q25.3

**RefSeq ORF:** 1758

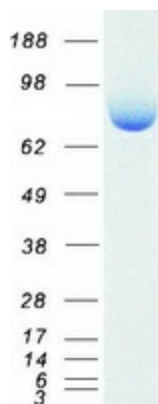
**Synonyms:** CVIL; CVL; HEL-S-105; VIL2

**Summary:** The cytoplasmic peripheral membrane protein encoded by this gene functions as a protein-tyrosine kinase substrate in microvilli. As a member of the ERM protein family, this protein serves as an intermediate between the plasma membrane and the actin cytoskeleton. This protein plays a key role in cell surface structure adhesion, migration and organization, and it has been implicated in various human cancers. A pseudogene located on chromosome 3 has been identified for this gene. Alternatively spliced variants have also been described for this gene. [provided by RefSeq, Jul 2008]

**Protein Families:** Druggable Genome

**Protein Pathways:** Leukocyte transendothelial migration, Pathogenic Escherichia coli infection, Regulation of actin cytoskeleton

### Product images:



Coomassie blue staining of purified EZR protein (Cat# TP300404). The protein was produced from HEK293T cells transfected with EZR cDNA clone (Cat# [RC200404]) using MegaTran 2.0 (Cat# [TT210002]).