

Product datasheet for **TP300403M**

CORO2A (NM_003389) Human Recombinant Protein

Product data:

Product Type:	Recombinant Proteins
Description:	Recombinant protein of human coronin, actin binding protein, 2A (CORO2A), transcript variant 1, 100 µg
Species:	Human
Expression Host:	HEK293T
Expression cDNA Clone or AA Sequence:	>RC200403 protein sequence Red =Cloning site Green =Tags(s)

MSWHPQYRSSKFRHVFGKPAKENCYDSVPITRSVHDNHFCVNPFIHAVVTECAGGGAFVLIPLHQTGK
LDPHYPKVCGHRGNVLDVKWNPFDDEIASCSEDAIKIWSIPKQLLTRNLTAIRKELVGHARRVGLVEW
HPTAANILFSAGYDYKVMIWNLDTKESVITSPMSTISCHQDVILSMSFNTNGSLATTCKDRKIRVIDPR
AGTVLQEASYKGRASKVFLGNLKMLMSTGTSRWNNRQVALWDQDNLSVPLMEEDLDGSSGVLPFFYDA
DTSMLYVVGKGDGNIRYYEVSADKPHLSYLTEYRSYNPQKIGVMPKRGLDVSSCEIFRFYKLITTKSLI
EPISMIVPRRSESYQEDIYPPTAGAQPSTLAQEWLSGMNRDPILVSLRPGSELLRPHPLPAERPIFNSMA
PASPRLNQTTEKLAEDGWRSSSLLEEKMPRWAAEHRLEEKKTWLTNGFDVFCPPPKTENELLQMFYRQ
QEEIRLRELLTQREVQAKQLELEIKNLRMGSEQL

TRTRPLEQKLISEEDLAANDILDYKDDDDKV

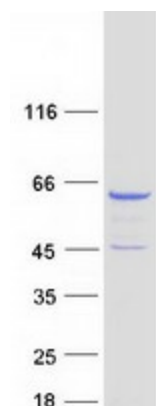
Tag:	C-Myc/DDK
Predicted MW:	59.6 kDa
Concentration:	>0.05 µg/µL as determined by microplate BCA method
Purity:	> 80% as determined by SDS-PAGE and Coomassie blue staining
Buffer:	25 mM Tris-HCl, 100 mM glycine, pH 7.3, 10% glycerol
Preparation:	Recombinant protein was captured through anti-DDK affinity column followed by conventional chromatography steps.
Note:	For testing in cell culture applications, please filter before use. Note that you may experience some loss of protein during the filtration process.
Storage:	Store at -80°C.



[View online »](#)

Stability:	Stable for 12 months from the date of receipt of the product under proper storage and handling conditions. Avoid repeated freeze-thaw cycles.
RefSeq:	NP_003380
Locus ID:	7464
UniProt ID:	Q92828 , A0A024R150 , A8K9S3
RefSeq Size:	5657
Cytogenetics:	9q22.33
RefSeq ORF:	1575
Synonyms:	CLIPINB; IR10; WDR2
Summary:	This gene encodes a member of the WD repeat protein family. WD repeats are minimally conserved regions of approximately 40 amino acids typically bracketed by gly-his and trp-asg (GH-WD), which may facilitate formation of heterotrimeric or multiprotein complexes. Members of this family are involved in a variety of cellular processes, including cell cycle progression, signal transduction, apoptosis, and gene regulation. This protein contains 5 WD repeats, and has a structural similarity with actin-binding proteins: the <i>D. discoideum</i> coronin and the human p57 protein, suggesting that this protein may also be an actin-binding protein that regulates cell motility. Alternative splicing of this gene generates 2 transcript variants. [provided by RefSeq, Jul 2008]

Product images:



Coomassie blue staining of purified CORO2A protein (Cat# [TP300403]). The protein was produced from HEK293T cells transfected with CORO2A cDNA clone (Cat# [RC200403]) using MegaTran 2.0 (Cat# [TT210002]).