

## Product datasheet for **TP300402M**

### 14-3-3 beta (YWHAB) (NM\_139323) Human Recombinant Protein

#### Product data:

Product Type:	Recombinant Proteins
Description:	Recombinant protein of human tyrosine 3-monooxygenase/tryptophan 5-monooxygenase activation protein, beta polypeptide (YWHAB), transcript variant 2, 100 µg
Species:	Human
Expression Host:	HEK293T
Expression cDNA Clone or AA Sequence:	>RC200402 protein sequence <b>Red</b> =Cloning site <b>Green</b> =Tags(s)

MTMDKSELVQKAKLAEQAERYDDMAAAMKAVTEQGHLSNEERNLLSVAYKNVVGARRSSWRVISSIEQK  
TERNEKKQQMGKEYREKIEAELQDICNDVLELLDKYLIPNATQPESKVFYLLKMGDYFRYLSEVASGDNK  
QTTVSNSQQAYQEAFAEISKKEMQPTHPIRLGLALNFSVFYIEILNSPEKACSLAKTAFDEAIAELDTLNE  
ESYKDSTLIMQLLRDNLTLWTSENQGDEGDAGEGEN

**TRTRPLEQKLISEEDLAANDILDYKDDDDKV**

Tag:	C-Myc/DDK
Predicted MW:	27.9 kDa
Concentration:	>0.05 µg/µL as determined by microplate BCA method
Purity:	> 80% as determined by SDS-PAGE and Coomassie blue staining
Buffer:	25 mM Tris-HCl, 100 mM glycine, pH 7.3, 10% glycerol
Preparation:	Recombinant protein was captured through anti-DDK affinity column followed by conventional chromatography steps.
Note:	For testing in cell culture applications, please filter before use. Note that you may experience some loss of protein during the filtration process.
Storage:	Store at -80°C.
Stability:	Stable for 12 months from the date of receipt of the product under proper storage and handling conditions. Avoid repeated freeze-thaw cycles.
RefSeq:	<u><a href="#">NP_647539</a></u>
Locus ID:	7529



[View online »](#)

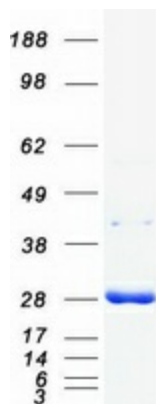
UniProt ID: [P31946](#), [V9HWD6](#)  
RefSeq Size: 3136  
Cytogenetics: 20q13.12  
RefSeq ORF: 738  
Synonyms: GW128; HEL-S-1; HS1; KCIP-1; YWHAA

**Summary:** This gene encodes a protein belonging to the 14-3-3 family of proteins, members of which mediate signal transduction by binding to phosphoserine-containing proteins. This highly conserved protein family is found in both plants and mammals. The encoded protein has been shown to interact with RAF1 and CDC25 phosphatases, suggesting that it may play a role in linking mitogenic signaling and the cell cycle machinery. Two transcript variants, which encode the same protein, have been identified for this gene. [provided by RefSeq, Jul 2008]

**Protein Families:** Druggable Genome

**Protein Pathways:** Cell cycle, Neurotrophin signaling pathway, Oocyte meiosis

### Product images:



Coomassie blue staining of purified YWHAB protein (Cat# [TP300402]). The protein was produced from HEK293T cells transfected with YWHAB cDNA clone (Cat# [RC200402]) using MegaTran 2.0 (Cat# [TT210002]).