

## Product datasheet for **TP300367M**

### ERH (NM\_004450) Human Recombinant Protein

#### Product data:

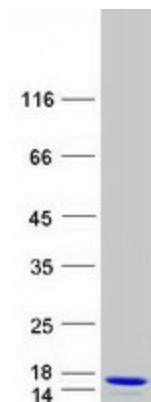
Product Type:	Recombinant Proteins
Description:	Recombinant protein of human enhancer of rudimentary homolog (Drosophila) (ERH), 100 µg
Species:	Human
Expression Host:	HEK293T
Expression cDNA Clone or AA Sequence:	>RC200367 protein sequence <b>Red</b> =Cloning site <b>Green</b> =Tags(s)
	MSHTILLVQPTKRPEGRTYADYESVNECMEGVCKMYEEHLKRMNPNSPSITYDISQLFDFIDDLADL SCL VYRADTQTYQPYNKDWIKEKIYVLLRRQAQQAGK
	<b>TRTRPLEQKLISEEDLAANDILDYKDDDDKV</b>
Tag:	C-Myc/DDK
Predicted MW:	12.1 kDa
Concentration:	>0.05 µg/µL as determined by microplate BCA method
Purity:	> 80% as determined by SDS-PAGE and Coomassie blue staining
Buffer:	25 mM Tris-HCl, 100 mM glycine, pH 7.3, 10% glycerol
Preparation:	Recombinant protein was captured through anti-DDK affinity column followed by conventional chromatography steps.
Note:	For testing in cell culture applications, please filter before use. Note that you may experience some loss of protein during the filtration process.
Storage:	Store at -80°C.
Stability:	Stable for 12 months from the date of receipt of the product under proper storage and handling conditions. Avoid repeated freeze-thaw cycles.
RefSeq:	<a href="#">NP_004441</a>
Locus ID:	2079
UniProt ID:	<a href="#">P84090</a> , <a href="#">A0A024R6D4</a>
RefSeq Size:	801
Cytogenetics:	14q24.1



[View online »](#)

RefSeq ORF: 312  
Synonyms: DROER  
Summary: May have a role in the cell cycle.[UniProtKB/Swiss-Prot Function]

### Product images:



Coomassie blue staining of purified ERH protein (Cat# [TP300367]). The protein was produced from HEK293T cells transfected with ERH cDNA clone (Cat# [RC200367]) using MegaTran 2.0 (Cat# [TT210002]).