

Product datasheet for **TP300367L**

ERH (NM_004450) Human Recombinant Protein

Product data:

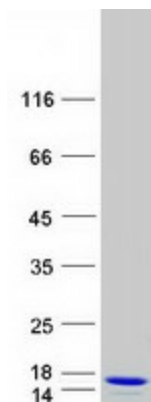
Product Type:	Recombinant Proteins
Description:	Recombinant protein of human enhancer of rudimentary homolog (Drosophila) (ERH), 1 mg
Species:	Human
Expression Host:	HEK293T
Expression cDNA Clone or AA Sequence:	>RC200367 protein sequence Red =Cloning site Green =Tags(s)
	MSHTILLVQPTKRPEGRTYADYESVNECEMEGVCKMYEEHLKRMNPNSPSITYDISQLFDFIDDLADLSDL VYRADTQTYQPYNKDWIKEKIYVLLRRQAQQAGK
	TRTRPLEQKLISEEDLAANDILDYKDDDDKV
Tag:	C-Myc/DDK
Predicted MW:	12.1 kDa
Concentration:	>0.05 µg/µL as determined by microplate BCA method
Purity:	> 80% as determined by SDS-PAGE and Coomassie blue staining
Buffer:	25 mM Tris-HCl, 100 mM glycine, pH 7.3, 10% glycerol
Preparation:	Recombinant protein was captured through anti-DDK affinity column followed by conventional chromatography steps.
Note:	For testing in cell culture applications, please filter before use. Note that you may experience some loss of protein during the filtration process.
Storage:	Store at -80°C.
Stability:	Stable for 12 months from the date of receipt of the product under proper storage and handling conditions. Avoid repeated freeze-thaw cycles.
RefSeq:	NP_004441
Locus ID:	2079
UniProt ID:	P84090 , A0A024R6D4
RefSeq Size:	801
Cytogenetics:	14q24.1



[View online »](#)

RefSeq ORF: 312
Synonyms: DROER
Summary: May have a role in the cell cycle.[UniProtKB/Swiss-Prot Function]

Product images:



Coomassie blue staining of purified ERH protein (Cat# [TP300367]). The protein was produced from HEK293T cells transfected with ERH cDNA clone (Cat# [RC200367]) using MegaTran 2.0 (Cat# [TT210002]).