

Product datasheet for **TP300352M**

RAB11A (NM_004663) Human Recombinant Protein

Product data:

Product Type:	Recombinant Proteins
Description:	Recombinant protein of human RAB11A, member RAS oncogene family (RAB11A), 100 µg
Species:	Human
Expression Host:	HEK293T
Expression cDNA Clone or AA Sequence:	>RC200352 protein sequence Red =Cloning site Green =Tags(s)
	<p>MGTRDDEYDYLFKVVLLIGDSGVGKSNLLSRFTRNEFNLESKSTIGVEFATRSIQVDGKTIKAQIWDTAGQ ERYRAITSAYYRGAVGALLVYDIAKHLTYENVERWLKELRDHADSNIVIMLVGNKSDLRHLRAVPTDEAR AFAEKNGLSFIETSALDSTNVEAAFQILTIEYRIVSQKQMSDRRENDMSPSNNVPIHVPPTTENKPKV QCCQNI</p> <p>TRTRPLEQKLISEEDLAANDILDYKDDDDKV</p>
Tag:	C-Myc/DDK
Predicted MW:	24.2 kDa
Concentration:	>0.05 µg/µL as determined by microplate BCA method
Purity:	> 80% as determined by SDS-PAGE and Coomassie blue staining
Buffer:	25 mM Tris-HCl, 100 mM glycine, pH 7.3, 10% glycerol
Preparation:	Recombinant protein was captured through anti-DDK affinity column followed by conventional chromatography steps.
Note:	For testing in cell culture applications, please filter before use. Note that you may experience some loss of protein during the filtration process.
Storage:	Store at -80°C.
Stability:	Stable for 12 months from the date of receipt of the product under proper storage and handling conditions. Avoid repeated freeze-thaw cycles.
RefSeq:	NP_004654
Locus ID:	8766
UniProt ID:	P62491 , A0A024R5Z8



[View online »](#)

RefSeq Size: 4943

Cytogenetics: 15q22.31

RefSeq ORF: 648

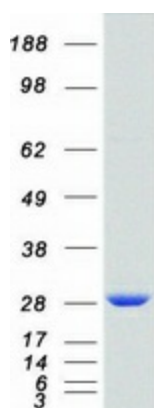
Synonyms: YL8

Summary: The protein encoded by this gene belongs to the Rab family of the small GTPase superfamily. It is associated with both constitutive and regulated secretory pathways, and may be involved in protein transport. Two transcript variants encoding different isoforms have been found for this gene. [provided by RefSeq, May 2011]

Protein Families: Druggable Genome

Protein Pathways: Endocytosis

Product images:



Coomassie blue staining of purified RAB11A protein (Cat# [TP300352]). The protein was produced from HEK293T cells transfected with RAB11A cDNA clone (Cat# [RC200352]) using MegaTran 2.0 (Cat# [TT210002]).