

## Product datasheet for **TP300348M**

### ROC1 (RBX1) (NM\_014248) Human Recombinant Protein

#### Product data:

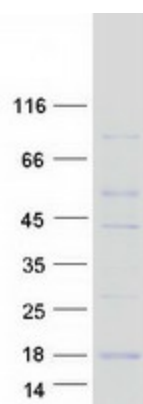
Product Type:	Recombinant Proteins
Description:	Recombinant protein of human ring-box 1 (RBX1), 100 µg
Species:	Human
Expression Host:	HEK293T
Expression cDNA Clone or AA Sequence:	>RC200348 protein sequence <b>Red</b> =Cloning site <b>Green</b> =Tags(s)
	 MAAAMDVDTPSGTNSGAGKKRFEVKKWNAVALWAWDIVVDNCAICRNHIMDLCECQANQASATSEECTV AWGVCNHAFFHFCISRWLKTRQVCPLDNREWEFQKYGH  <b>TRTRPLEQKLISEEDLAANDILDYKDDDDKV</b>
Tag:	C-Myc/DDK
Predicted MW:	12.1 kDa
Concentration:	>0.05 µg/µL as determined by microplate BCA method
Purity:	> 80% as determined by SDS-PAGE and Coomassie blue staining
Buffer:	25 mM Tris-HCl, 100 mM glycine, pH 7.3, 10% glycerol
Preparation:	Recombinant protein was captured through anti-DDK affinity column followed by conventional chromatography steps.
Note:	For testing in cell culture applications, please filter before use. Note that you may experience some loss of protein during the filtration process.
Storage:	Store at -80°C.
Stability:	Stable for 12 months from the date of receipt of the product under proper storage and handling conditions. Avoid repeated freeze-thaw cycles.
RefSeq:	<a href="#">NP_055063</a>
Locus ID:	9978
UniProt ID:	<a href="#">P62877</a>
RefSeq Size:	906
Cytogenetics:	22q13.2



[View online »](#)

RefSeq ORF:	324
Synonyms:	BA554C12.1; RNF75; ROC1
Summary:	This locus encodes a RING finger-like domain-containing protein. The encoded protein interacts with cullin proteins and likely plays a role in ubiquitination processes necessary for cell cycle progression. This protein may also affect protein turnover. Related pseudogenes exist on chromosomes 2 and 5.[provided by RefSeq, Sep 2010]
Protein Families:	Druggable Genome
Protein Pathways:	Cell cycle, Nucleotide excision repair, Oocyte meiosis, Pathways in cancer, Renal cell carcinoma, TGF-beta signaling pathway, Ubiquitin mediated proteolysis, Wnt signaling pathway

### Product images:



Coomassie blue staining of purified RBX1 protein (Cat# [TP300348]). The protein was produced from HEK293T cells transfected with RBX1 cDNA clone (Cat# [RC200348]) using MegaTran 2.0 (Cat# [TT210002]).