

## Product datasheet for **TP300344L**

### **TXNL1 (NM\_004786) Human Recombinant Protein**

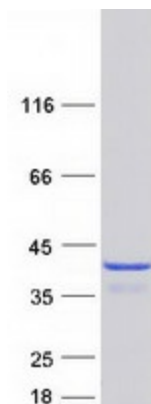
#### **Product data:**

<b>Product Type:</b>	Recombinant Proteins
<b>Description:</b>	Recombinant protein of human thioredoxin-like 1 (TXNL1), transcript variant 1, 1 mg
<b>Species:</b>	Human
<b>Expression Host:</b>	HEK293T
<b>Expression cDNA Clone or AA Sequence:</b>	>RC200344 protein sequence <b>Red</b> =Cloning site <b>Green</b> =Tags(s)
	 MVGVKPVGSDPDFQPELSGAGSRLAVVKFTMRGCGPCLRIAPAFSSMSNKYPQAVFLEVDVHQCQGTAA NNISATPTFLFRNKVRIDQYQGADAVGLEEKIKQHLENDPGSNEDTDIPKGYMDLMPFINKAGCECLNE SDEHGFDNCLRKDTTFLESDCDEQLLITVAFNQPVKLYSMKFQGPDNGQGPKYVKIFINLPRSMDFEEAE RSEPTQALELTEDDIKEDGIVPLRYVKFQNVNSVTIFVQSNQGEETTRISYFTFIGTPVQATNMNDFKR VVGKKGESH  <b>TRTRPLEQKLISEEDLAANDILDYKDDDDKV</b>
<b>Tag:</b>	C-Myc/DDK
<b>Predicted MW:</b>	32.1 kDa
<b>Concentration:</b>	>0.05 µg/µL as determined by microplate BCA method
<b>Purity:</b>	> 80% as determined by SDS-PAGE and Coomassie blue staining
<b>Buffer:</b>	25 mM Tris-HCl, 100 mM glycine, pH 7.3, 10% glycerol
<b>Preparation:</b>	Recombinant protein was captured through anti-DDK affinity column followed by conventional chromatography steps.
<b>Note:</b>	For testing in cell culture applications, please filter before use. Note that you may experience some loss of protein during the filtration process.
<b>Storage:</b>	Store at -80°C.
<b>Stability:</b>	Stable for 12 months from the date of receipt of the product under proper storage and handling conditions. Avoid repeated freeze-thaw cycles.
<b>RefSeq:</b>	<u><a href="#">NP_004777</a></u>
<b>Locus ID:</b>	9352



[View online »](#)

UniProt ID:	<a href="#">Q43396</a>
RefSeq Size:	1329
Cytogenetics:	18q21.31
RefSeq ORF:	867
Synonyms:	HEL-S-114; TRP32; TxI; TXL-1; TXNL
Summary:	Active thioredoxin with a redox potential of about -250 mV.[UniProtKB/Swiss-Prot Function]
Protein Families:	Druggable Genome

**Product images:**

Coomassie blue staining of purified TXNL1 protein (Cat# [TP300344]). The protein was produced from HEK293T cells transfected with TXNL1 cDNA clone (Cat# [RC200344]) using MegaTran 2.0 (Cat# [TT210002]).