

Product datasheet for **TP300333**

Aldolase C (ALDOC) (NM_005165) Human Recombinant Protein

Product data:

Product Type:	Recombinant Proteins
Description:	Recombinant protein of human aldolase C, fructose-bisphosphate (ALDOC), 20 µg
Species:	Human
Expression Host:	HEK293T
Expression cDNA Clone or AA Sequence:	>RC200333 protein sequence Red =Cloning site Green =Tags(s)
	MPHSPALSAEQKKELSDIARIVAPGKGIILAADESVGSMARLSQIGVENTEENRRLYRQVLFSADDRV KCCIGGVIFFHETLYQKDDNGVPPFVRTIQDKGIVGIVKVDKGVPLAGTDGETTTQGLDGLSERCAQYKK DGADFAKWRCVLKISERTPSALAIENANVLARYASICQNGIVPIVEPEILPDGDHDLKRCQYVTEKVL AAVYKALSDHHVYLEGTLKPNMVTPGHACPIKYTPEEIAMATVTALRRTVPPAVPGVTFLSGGQSEEEA SFNLNAINRCPLRPWALTFSYGRALQASALNAWRGQRDNAGAATEEFIKRAEVNGLAAQGKYEGSGEDG GAAAQSLYIANHAY
	TRTRPLEQKLISEEDLAANDILDYKDDDDKV
Tag:	C-Myc/DDK
Predicted MW:	39.3 kDa
Concentration:	>0.05 µg/µL as determined by microplate BCA method
Purity:	> 80% as determined by SDS-PAGE and Coomassie blue staining
Buffer:	25 mM Tris-HCl, 100 mM glycine, pH 7.3, 10% glycerol
Preparation:	Recombinant protein was captured through anti-DDK affinity column followed by conventional chromatography steps.
Note:	For testing in cell culture applications, please filter before use. Note that you may experience some loss of protein during the filtration process.
Storage:	Store at -80°C.
Stability:	Stable for 12 months from the date of receipt of the product under proper storage and handling conditions. Avoid repeated freeze-thaw cycles.
RefSeq:	NP_005156
Locus ID:	230



[View online »](#)

UniProt ID: [P09972](#)

RefSeq Size: 1665

Cytogenetics: 17q11.2

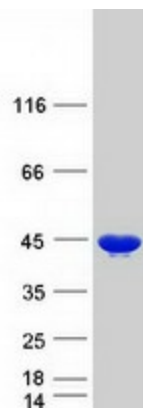
RefSeq ORF: 1092

Synonyms: ALDC

Summary: This gene encodes a member of the class I fructose-biphosphate aldolase gene family. Expressed specifically in the hippocampus and Purkinje cells of the brain, the encoded protein is a glycolytic enzyme that catalyzes the reversible aldol cleavage of fructose-1,6-biphosphate and fructose 1-phosphate to dihydroxyacetone phosphate and either glyceraldehyde-3-phosphate or glyceraldehyde, respectively. [provided by RefSeq, Jul 2008]

Protein Pathways: Fructose and mannose metabolism, Glycolysis / Gluconeogenesis, Metabolic pathways, Pentose phosphate pathway

Product images:



Coomassie blue staining of purified ALDOC protein (Cat# TP300333). The protein was produced from HEK293T cells transfected with ALDOC cDNA clone (Cat# [RC200333]) using MegaTran 2.0 (Cat# [TT210002]).