

Product datasheet for **TP300332L**

RHOC (NM_001042679) Human Recombinant Protein

Product data:

Product Type: Recombinant Proteins

Description: Recombinant protein of human ras homolog gene family, member C (RHOC), transcript variant 3, 1 mg

Species: Human

Expression Host: HEK293T

Expression cDNA Clone or AA Sequence: >RC200332 protein sequence
Red=Cloning site **Green**=Tags(s)

MAAIRKKLVIVGDGACGKTCLLIVFSKDQFPEVYVPTVFENYIADIEVDGKQVELALWDTAGQEDYDRLR
PLSYPD TDVILMCF SIDSPDSLENIPEKWTPEVKHFPCNPV IILVGNKKDLRQDEHTRRELAKMKQEPVR
SEEGRDMANRISAFGYLECSAKTKEGVREVFEMATRAGLQVRKNKRRRGCPIL

TRTRPLEQKLISEEDLAANDILDYKDDDDKV

Tag: C-Myc/DDK

Predicted MW: 21.8 kDa

Concentration: >0.05 µg/µL as determined by microplate BCA method

Purity: > 80% as determined by SDS-PAGE and Coomassie blue staining

Buffer: 25 mM Tris-HCl, 100 mM glycine, pH 7.3, 10% glycerol

Preparation: Recombinant protein was captured through anti-DDK affinity column followed by conventional chromatography steps.

Note: For testing in cell culture applications, please filter before use. Note that you may experience some loss of protein during the filtration process.

Storage: Store at -80°C.

Stability: Stable for 12 months from the date of receipt of the product under proper storage and handling conditions. Avoid repeated freeze-thaw cycles.

RefSeq: [NP_001036144](#)

Locus ID: 389

UniProt ID: [P08134](#), [A0A024ROC8](#)



[View online »](#)

RefSeq Size: 1313

Cytogenetics: 1p13.2

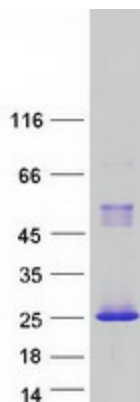
RefSeq ORF: 579

Synonyms: ARH9; ARHC; H9; RHOH9

Summary: This gene encodes a member of the Rho family of small GTPases, which cycle between inactive GDP-bound and active GTP-bound states and function as molecular switches in signal transduction cascades. Rho proteins promote reorganization of the actin cytoskeleton and regulate cell shape, attachment, and motility. The protein encoded by this gene is prenylated at its C-terminus, and localizes to the cytoplasm and plasma membrane. It is thought to be important in cell locomotion. Overexpression of this gene is associated with tumor cell proliferation and metastasis. Multiple alternatively spliced variants, encoding the same protein, have been identified. [provided by RefSeq, Jul 2008]

Protein Families: Druggable Genome

Product images:



Coomassie blue staining of purified RHOC protein (Cat# [TP300332]). The protein was produced from HEK293T cells transfected with RHOC cDNA clone (Cat# [RC200332]) using MegaTran 2.0 (Cat# [TT210002]).